


RNAV (GPS) RWY 18

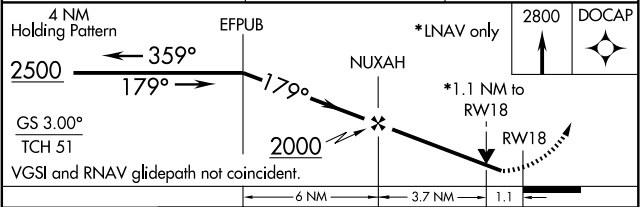
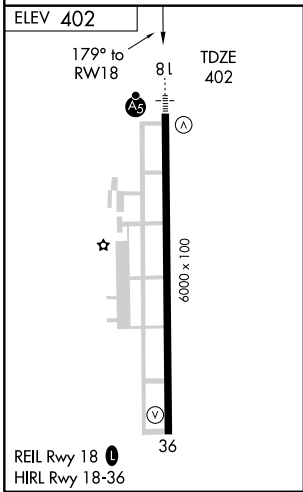
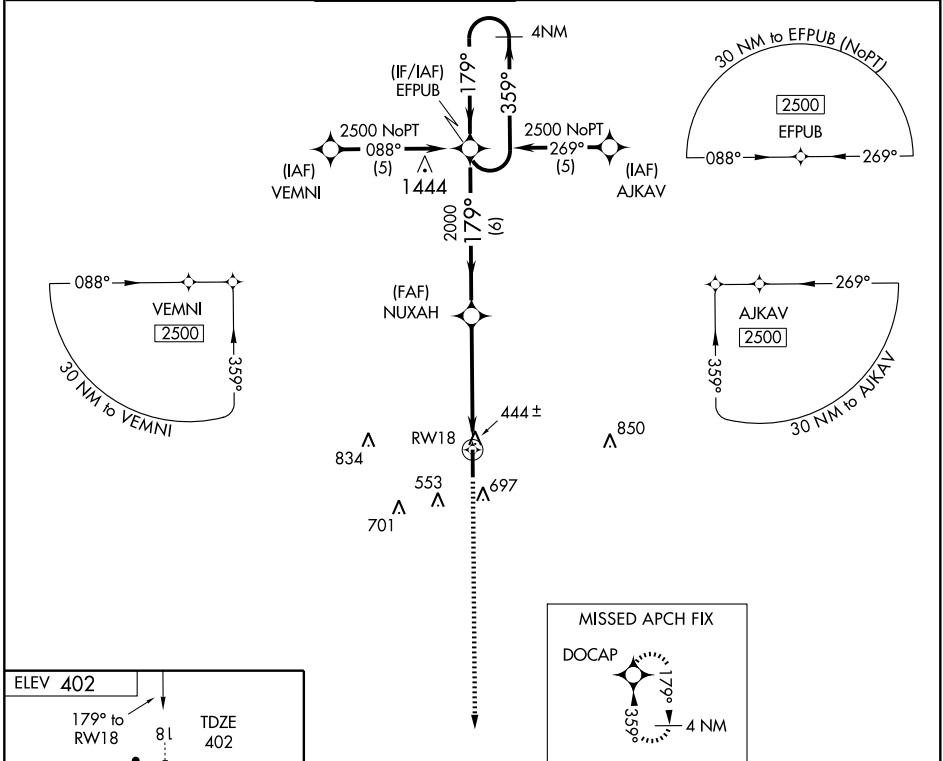
OLIVE BRANCH (OLV)

WAAS CH 61199	APP CRS 179°	Rwy Idg TDZE 402
W18A		Apt Elev 402

⚠ If local altimeter setting not received, use Memphis Intl altimeter setting and increase all DAs/MDAs 40 feet. BARO-VNAV and VDP NA when using Memphis Intl altimeter setting.
⚠ BARO-VNAV NA below -1.5°C (5°F). DME/DME RNP-0.3 NA.

MALSR
 **MISSED APPROACH:** Climb to 2800 direct DOCAP and hold.

ATIS 119.925	MEMPHIS APP CON 121.0 125.8 338.3	OLIVE BRANCH TOWER 125.275 (CTAF) 0	GND CON 121.2	CLNC DEL 121.2	UNICOM 122.7
------------------------	---	--	-------------------------	--------------------------	------------------------



CATEGORY	A	B	C	D
LPV DA		652-3/4	250 (300-3/4)	
LNAV/VNAV DA		702-1	300 (300-1)	
LNAV MDA	780-1	378 (400-1)		780-1 1/4 378 (400-1 1/4)
CIRCLING	1060-1	658 (700-1)	1060-1 3/4 658 (700-1 3/4)	1060-2 658 (700-2)

SC-4, 22 OCT 2009 to 19 NOV 2009

SC-4, 22 OCT 2009 to 19 NOV 2009