

ILS or LOC RWY 18

OLIVE BRANCH (OLV)

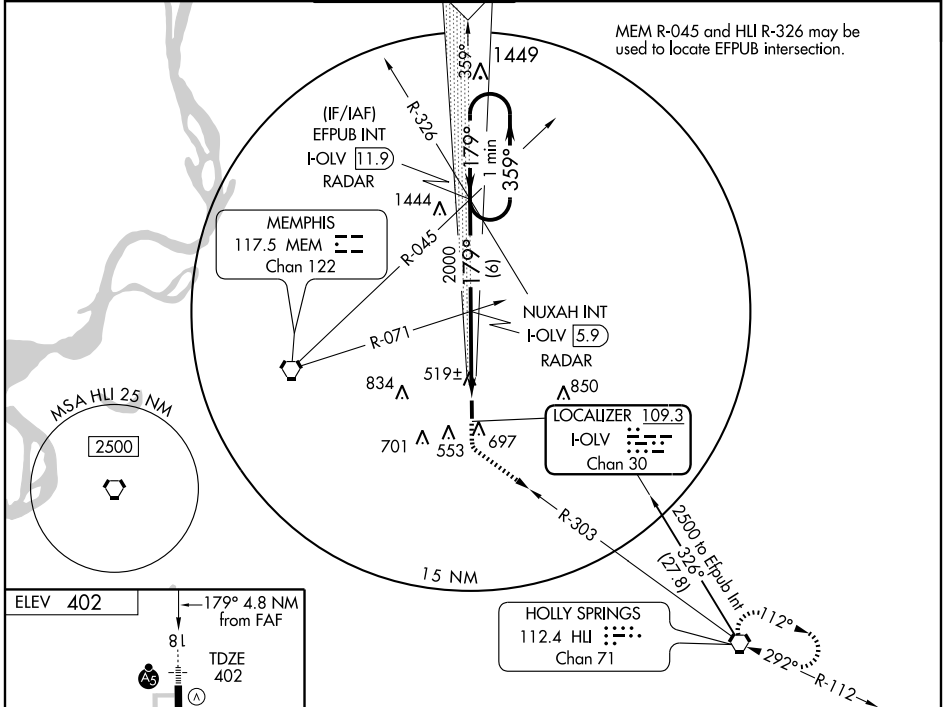
LOC/DME I-OLV 109.3 Chan 30	APP CRS 179°	Rwy Idg TDZE Apt Elev	6000 402 402
--	------------------------	-----------------------------	---

⚠ When local altimeter setting not received, use Memphis Intl altimeter setting and increase all DAs/MDAs 40 feet, and circling Cats C and D visibility ¼ mile. For inoperative MALS, increase S-LOC 18 Cats A, B, C visibility to 1 mile. When using Memphis Intl altimeter setting, for inoperative MALS, increase S-ILS 18, all Cats and S-LOC 18 Cats A and B visibility ¼ mile. Inoperative table does not apply to S-ILS 18. Visibility reduction by helicopters NA.

MALS

MISSED APPROACH: Climb to 2500 via heading 179° and HLI R-303 to HLI VORTAC and hold.

ATIS 119.925	MEMPHIS APP CON 121.0 125.8 338.3	OLIVE BRANCH TOWER 125.275 (CTAF) 0	GND CON 121.2	CLNC DEL 121.2	UNICOM 122.7
------------------------	---	---	-------------------------	--------------------------	------------------------



SC-4, 22 OCT 2009 to 19 NOV 2009

SC-4, 22 OCT 2009 to 19 NOV 2009

ELEV 402

179° 4.8 NM from FAF

81 TDZE 402

36

FAF to MAP 4.8 NM

Knots	60	90	120	150	180
Min:Sec	4:48	3:12	2:24	1:55	1:36

One Minute Holding Pattern	EFPUB INT I-OLV 11.9 RADAR	NUXAH INT I-OLV 5.9 RADAR	2500 HDG 179°	HLI HLI R-303 112.4
----------------------------	-----------------------------------	----------------------------------	---------------	---------------------

CATEGORY	A	B	C	D
S-ILS 18		652-¾ 250 (300-¾)		
S-LOC 18		780-¾ 378 (400-¾)		
CIRCLING	1060-1	658 (700-1)	1060-1¾ 658 (700-1¾)	1060-2 658 (700-2)