

PERRY, GEORGIA

AL-5882 (FAA)

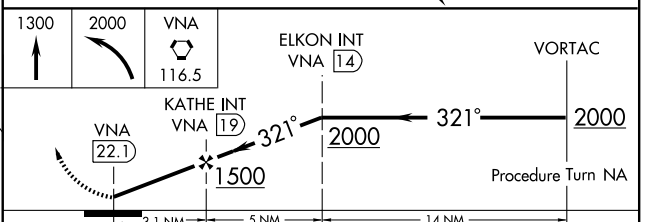
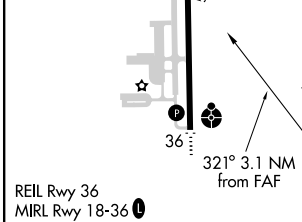
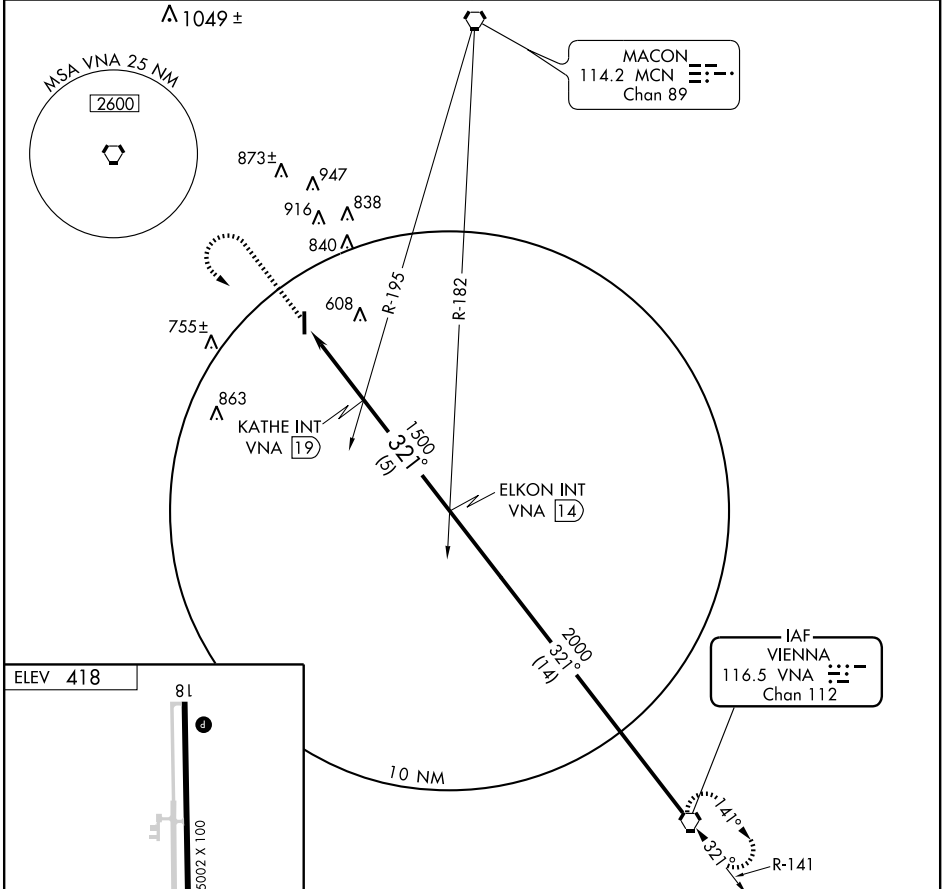
VOR-A

PERRY-HOUSTON COUNTY (PXE)

VORTAC VNA <b>116.5</b> Chan <b>112</b>	APP CRS <b>321°</b>	Rwy Idg TDZE Apt Elev	<b>N/A</b> <b>N/A</b> <b>418</b>
---	------------------------	-----------------------------	--

**NA** If local altimeter setting not received, use Macon altimeter setting and increase all MDAs 40 feet. MISSED APPROACH: Climb to 1300 then climbing left turn to 2000 direct VNA VORTAC and hold.

AWOS-3 <b>123.825</b>	ATLANTA APP CON * <b>124.2 279.6</b>	GCO <b>121.725</b>	UNICOM <b>122.7</b> (CTAF) <b>0</b>
--------------------------	---	-----------------------	--



FAF to MAP 3.1 NM					
Knots	60	90	120	150	180
Min:Sec	3:06	2:04	1:33	1:14	1:02
CATEGORY	A	B	C	D	
CIRCLING	860-1 442 (500-1)	880-1¼ 462 (500-1½)	880-1½ 462 (500-1½)	980-2 562 (600-2)	

PERRY, GEORGIA  
Amdt 5A 07354

32°31'N-83°46'W

PERRY-HOUSTON COUNTY (PXE)

VOR-A

SE-4, 22 OCT 2009 to 19 NOV 2009

SE-4, 22 OCT 2009 to 19 NOV 2009