


RNAV (GPS) RWY 36

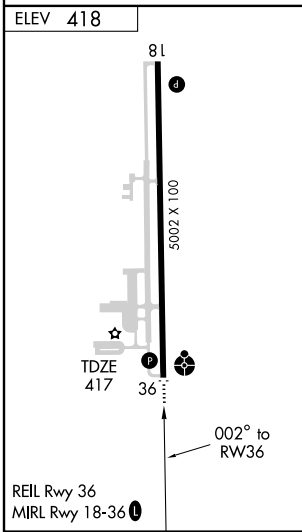
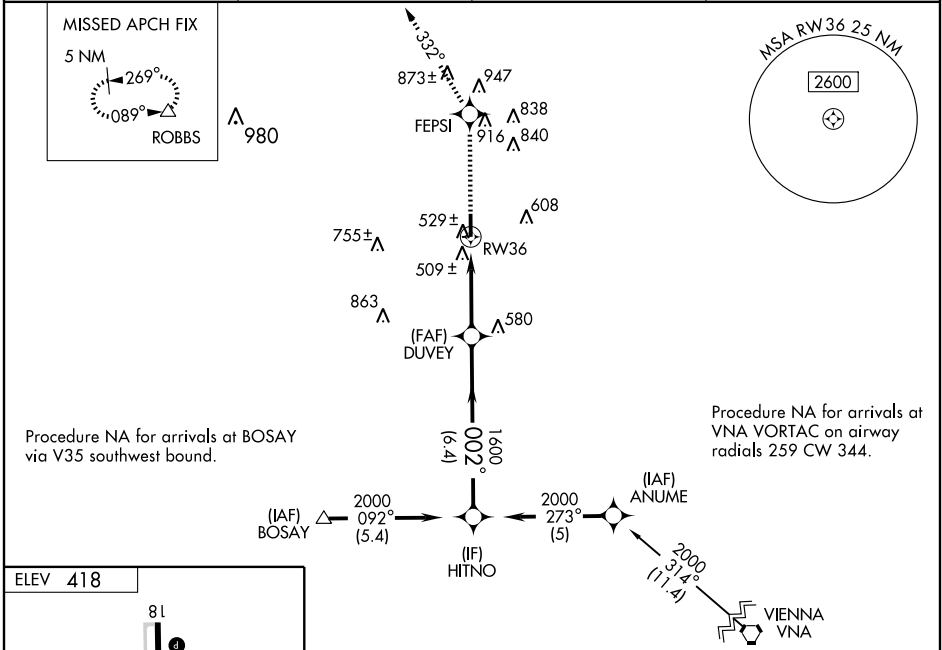
PERRY-HOUSTON COUNTY (PXE)

WAAS CH 86805 W36A	APP CRS 002°	Rwy Idg 5002
		TDZE 417
		Apt Elev 418

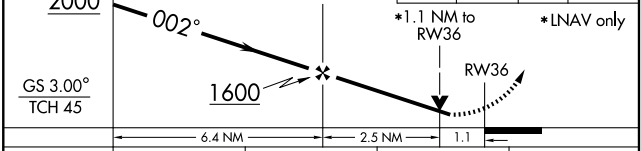
⚠ **NA** If local altimeter setting not received, use Middle Georgia Rgnl altimeter setting and increase all DAs/MDA 40 feet. Baro-VNAV NA when using Middle Georgia Rgnl altimeter setting. For uncompensated Baro-VNAV systems, LNAV/VNAV NA below -15°C (5°F) or above 47°C (116°F). VDP NA when using Middle Georgia Rgnl altimeter setting. Inoperative table does not apply to LNAV-VNAV. Visibility reduction by helicopters NA. DME/DME RNP-0.3 NA.

ODALS  MISSED APPROACH: Climb to 2500 direct FEPSI and via 332° track to ROBBS and hold.

AWOS-3 123.825	ATLANTA APP CON* 124.2 279.6	GCO 121.725	UNICOM 122.7 (CTAF) 0
--------------------------	--	-----------------------	---------------------------------



Procedure Turn NA	HITNO	VGSI and RNAV glidepath not coincident.	2500	FEPSI	332° TRK	ROBBS
-------------------	-------	---	------	-------	----------	-------



CATEGORY	A	B	C	D
LPV DA	778-1¼ 361 (400-1¼)			
LNAV/VNAV DA	806-1½ 389 (400-1½)			
LNAV MDA	780-¾ 363 (400-¾)			780-1¼ 363 (400-1¼)
CIRCLING	860-1 442 (500-1)	880-1 462 (500-1)	880-1½ 462 (500-1½)	980-2 562 (600-2)

SE-4, 22 OCT 2009 to 19 NOV 2009

SE-4, 22 OCT 2009 to 19 NOV 2009