

RNAV (GPS) RWY 18

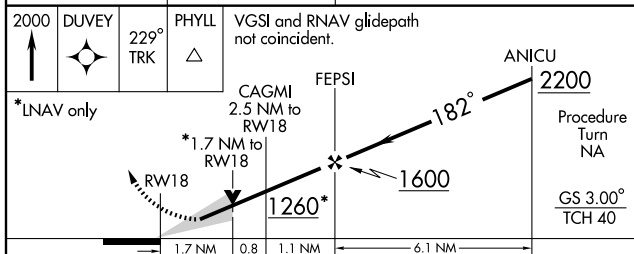
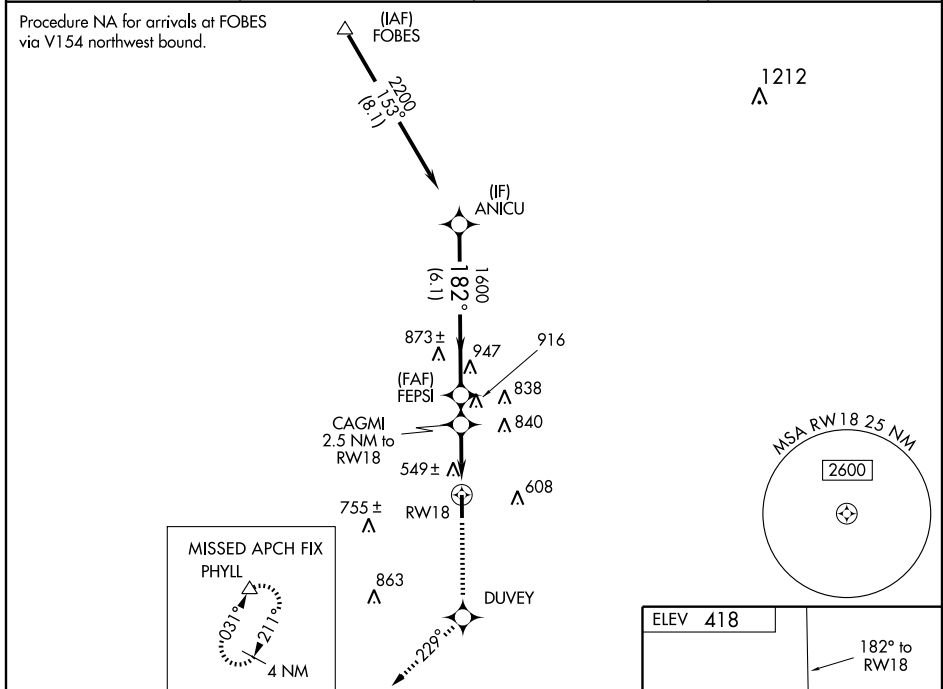
PERRY-HOUSTON COUNTY (PXE)

WAAS CH 87104 W18A	APP CRS 182°	Rwy Idg TDZE Apt Elev	5002 418 418
--	------------------------	-----------------------------	---

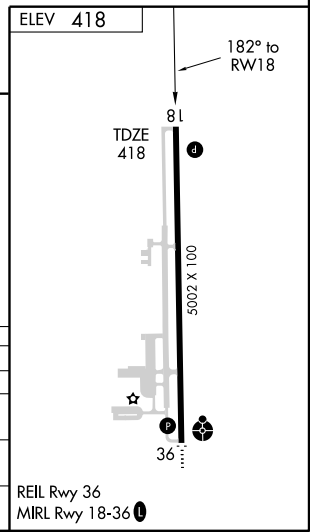
▽ **▲** NA For uncompensated Baro-VNAV systems, LNAV/VNAV NA below -15°C (5°F) or above 47°C (116°F). DME/DME RNP-0.3 NA. If local altimeter setting not received, procedure NA.

MISSED APPROACH: Climb to 2000 direct DUVEY and via 229° track to PHYLL and hold.

AWOS-3 123.825	ATLANTA APP CON* 124.2 279.6	GCO 121.725	UNICOM 122.7 (CTAF)
--------------------------	--	-----------------------	-------------------------------



2000	DUVEY	229° TRK	PHYLL	VGSI and RNAV glidepath not coincident.
*LNAV only				
CATEGORY	A	B	C	D
LPV DA	668-1 250 (300-1)			
LNAV/DA VNAV	854-1½ 436 (500-1½)			
LNAV MDA	980-1	562 (600-1)	980-1½ 562 (600-1½)	980-1¾ 562 (600-1¾)
CIRCLING	980-1	562 (600-1)	980-1½ 562 (600-1½)	980-2 562 (600-2)



SE-4, 22 OCT 2009 to 19 NOV 2009

SE-4, 22 OCT 2009 to 19 NOV 2009

REIL Rwy 36
MIRL Rwy 18-36