

PERRY, GEORGIA

AL-5882 (FAA)

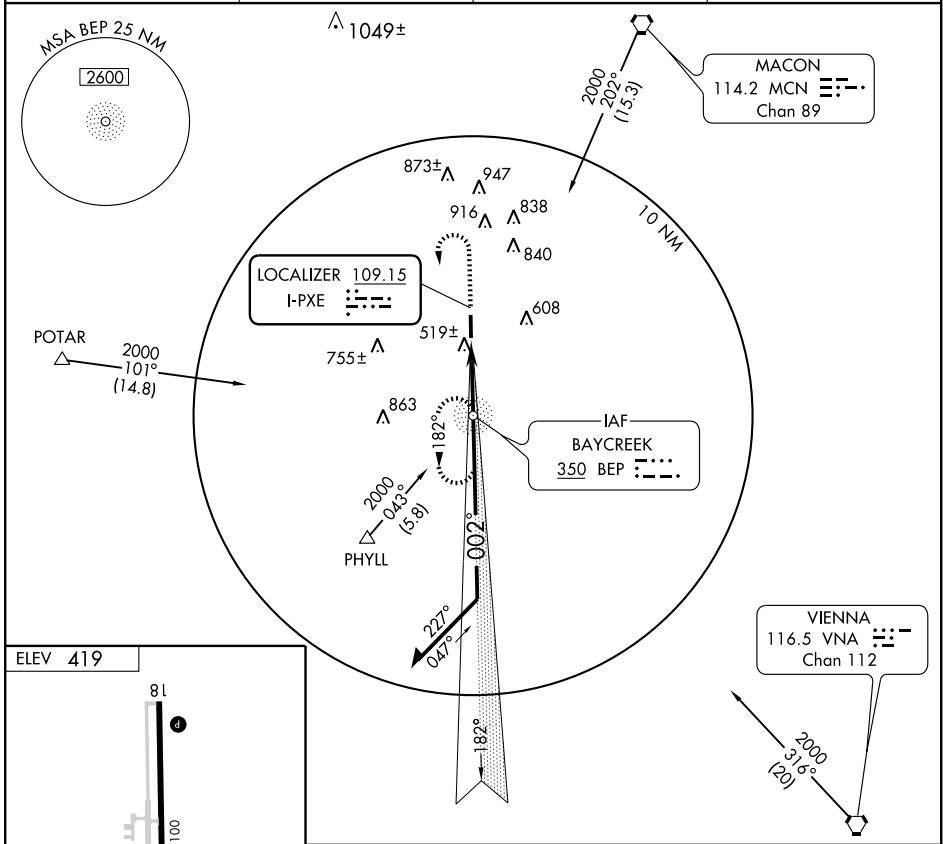
LOC RWY 36

PERRY-HOUSTON COUNTY (PXE)

LOC I-PXE 109.15	APP CRS 002°	Rwy Idg 5002
		TDZE 417
		Apt Elev 419

<p>▼ If local altimeter setting not received, use Macon altimeter setting and increase all MDAs 40 feet. ▲ NA Inoperative table does not apply. ADF REQUIRED</p>	<p>ODALS </p>	<p>MISSED APPROACH: Climb to 1200 then climbing left turn to 2000 direct BEP NDB and hold.</p>
---	--------------------	--

AWOS-3 123.825	ATLANTA APP CON* 124.2 279.6	GCO 121.725	UNICOM 122.7 (CTAF)
--------------------------	--	-----------------------	-------------------------------

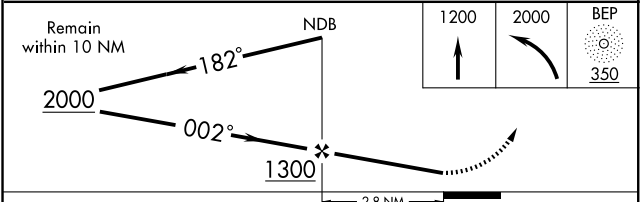


ELEV 419

REIL Rwy 36
MIRL Rwy 18-36

FAF to MAP 2.8 NM
002° 2.8 NM from FAF

Knots	60	90	120	150	180
Min:Sec	2:48	1:52	1:24	1:07	0:56



CATEGORY	A	B	C	D
S-36	780-1 363 (400-1)			780-1/4 363 (400-1/4)
CIRCLING	860-1 441 (500-1)	880-1 461 (500-1)	880-1/2 461 (500-1/2)	980-2 561 (600-2)

PERRY, GEORGIA
Amdt 1 07354

32°31'N-83°46'W

PERRY-HOUSTON COUNTY (PXE)

LOC RWY 36

SE-4, 22 OCT 2009 to 19 NOV 2009

SE-4, 22 OCT 2009 to 19 NOV 2009