

RNAV (GPS) RWY 5

JACKSONVILLE/ALBERT J. ELLIS (O.A.J)

WAAS CH 49009 W05A	APP CRS 052°	Rwy Idg TDZE Apt Elev	7100 90 94
----------------------------------------	------------------------	-----------------------------	---------------------------------------

⚠ Baro-VNAV NA when using Wilmington altimeter setting. For uncompensated Baro-VNAV systems, LNAV/VNAV NA below -1.5°C (5°F) or above 49°C (120°F). DME/DME RNP-0.3 NA. VDP NA when using Wilmington altimeter setting. When local altimeter setting not received, use Wilmington altimeter setting and increase all DA/MDA 100 feet, increase LPV and LNAV/VNAV visibility ¼ mile, LNAV Cat C ¼ mile. For inoperative MALSR increase LPV all Cats visibility to 1, LNAV Cat D visibility to 1¼. For inoperative MALSR, when using Wilmington altimeter setting, increase LPV all Cats visibility to 1¼ miles.

MALSR

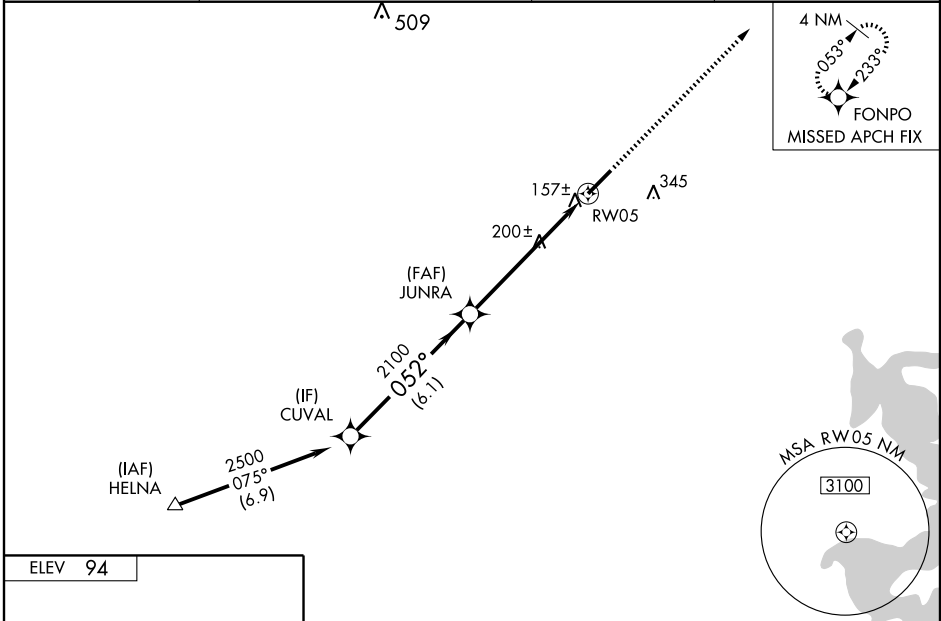
MISSED APPROACH:
Climb to 3100 direct FONPO and hold.

AWOS-3 124.475

WILMINGTON APP CON *
135.75 257.6 346.35

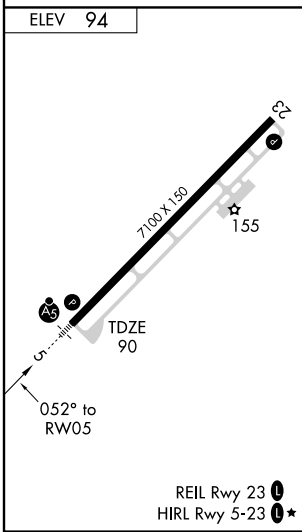
CLNC DEL 121.4

UNICOM 123.0 (CTAF)



SE-2, 22 OCT 2009 to 19 NOV 2009

SE-2, 22 OCT 2009 to 19 NOV 2009



Procedure Turn NA	CUVAL	2500	JUNRA	052°	2100	RWY 5
GS 3.00°	TCH 55	6.1 NM	5 NM	1 NM		
CATEGORY	A	B	C	D		
LPV DA		375-½	285 (300-½)			
LNAV/VNAV DA		428-¾	338 (400-¾)			
LNAV MDA		460-½	370 (400-½)		460-1	370 (400-1)
CIRCLING	500-1 406 (500-1)	560-1 466 (500-1)	560-1½ 466 (500-1½)		660-2	566 (600-2)