

DAYTON, OHIO

AL-5879 (FAA)

VOR-A

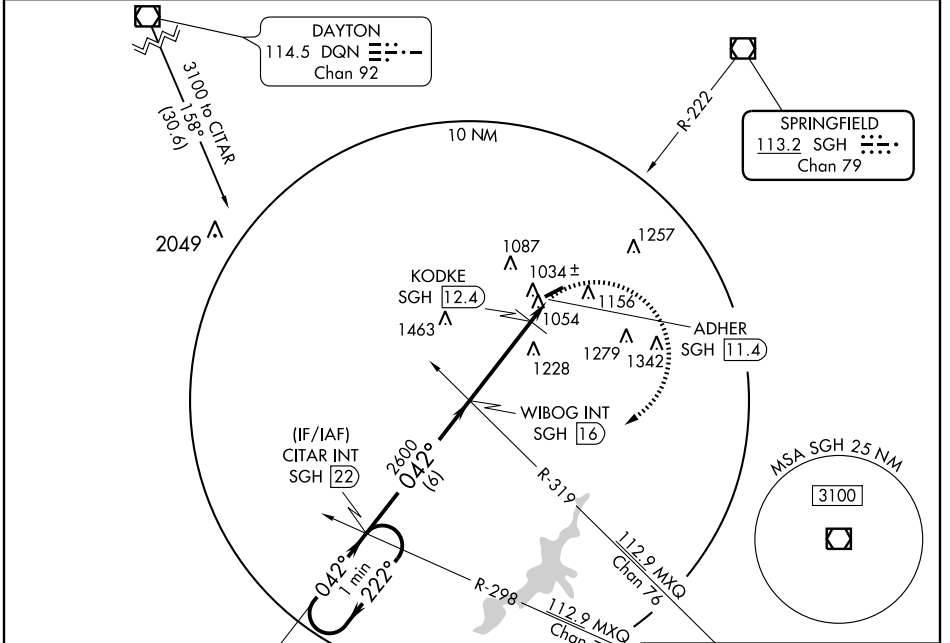
VOR/DME SGH 113.2 Chan 79	APP CRS 042°	Rwy Idg TDZE Apt Elev	N/A N/A 949
---	------------------------	-----------------------------	--

DAYTON / GREENE COUNTY-LEWIS A. JACKSON RGNL (I19)

NA When local altimeter setting not received, use Dayton-Wright Brothers altimeter setting and increase all MDA 40 feet and Cat C visibility 1/4 mile.

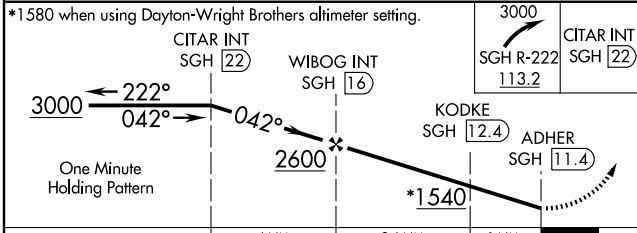
MISSED APPROACH: Climbing right turn to 3000 via SGH VOR/DME R-222 to CITAR Int/SGH 22 DME and hold.

AWOS-3 118.525	DAYTON APP CON 118.85 327.1	GCO 121.725	UNICOM 122.7 (CTAF)
--------------------------	---------------------------------------	-----------------------	-------------------------------



EC-2, 22 OCT 2009 to 19 NOV 2009

EC-2, 22 OCT 2009 to 19 NOV 2009



CATEGORY	A	B	C	D
CIRCLING	1540-1	591 (600-1)	1540-1 1/2 591 (600-1 1/2)	NA
KODKE FIX MINIMUMS				
CIRCLING	1460-1	511 (600-1)	1460-1 1/2 511 (600-1 1/2)	NA

ELEV 949

LIRL Rwy 7-25
REIL Rwys 7 and 25

FAF to MAP 4.6 NM

Knots	60	90	120	150	180
Min:Sec	4:36	3:04	2:18	1:50	1:32

DAYTON, OHIO
Orig 09155

DAYTON / GREENE COUNTY-LEWIS A. JACKSON RGNL (I19)
39°42'N - 83°59'W

VOR-A