

DAYTON, OHIO

AL-5879 (FAA)

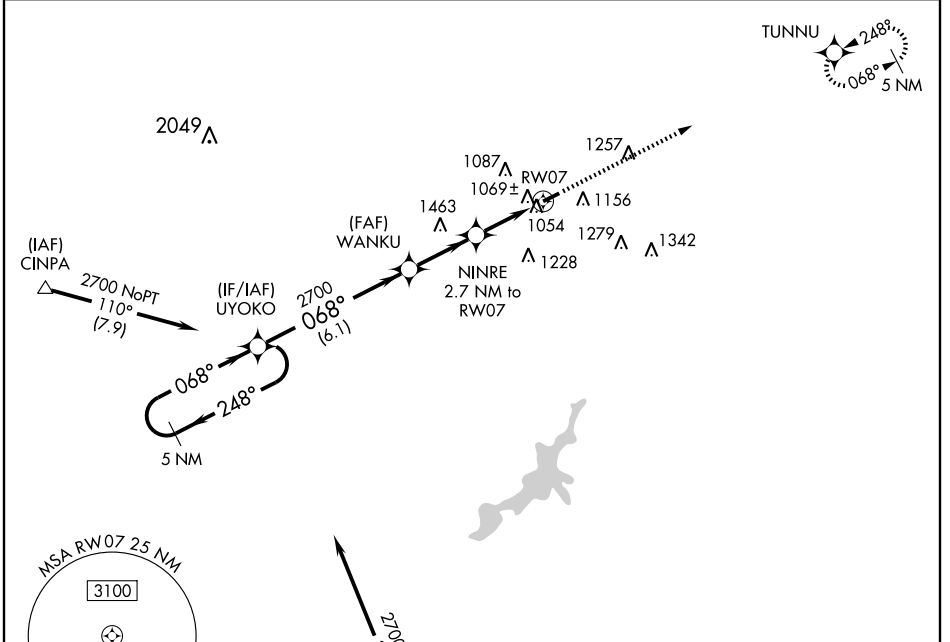
WAAS CH 97702 W07A	APP CRS 068°	Rwy Idg 4500 TDZE 936 Apt Elev 946
--	------------------------	---

RNAV (GPS) RWY 7

DAYTON / GREENE COUNTY-LEWIS A. JACKSON RGNL (I19)

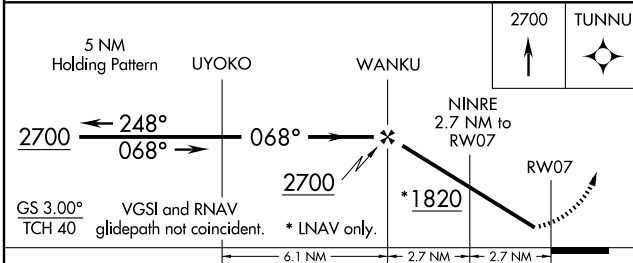
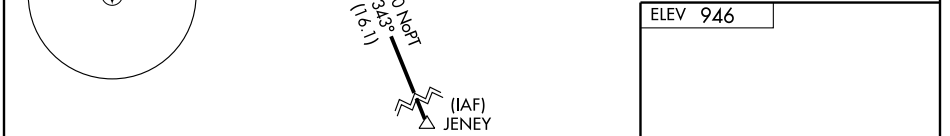
▽ DME/DME RNP-0.3 NA. If local altimeter setting not received, use Dayton-Wright Brothers altimeter setting and increase all DAs/MDAs 40 feet. Visibility reduction by helicopters NA.	MISSED APPROACH: Climb to 2700 direct TUNNU and hold.
---	---

AWOS-3 118.525	DAYTON APP CON 118.85 327.1	GCO 121.725	UNICOM 122.7 (CTAF)
--------------------------	---------------------------------------	-----------------------	-------------------------------

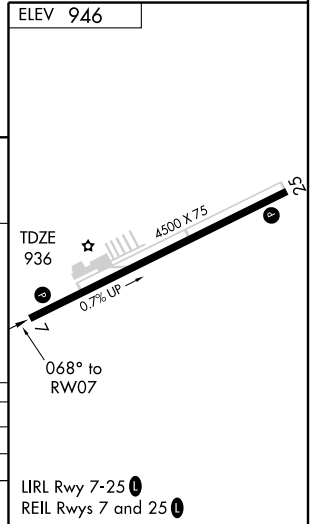


EC-2, 22 OCT 2009 to 19 NOV 2009

EC-2, 22 OCT 2009 to 19 NOV 2009



CATEGORY	A	B	C	D
LPV DA	1236-1¼	300 (300-1¼)		NA
LNAV MDA	1320-1	384 (400-1)		NA
CIRCLING	1460-1	514 (600-1)	1460-1½ 514 (600-1½)	NA



DAYTON, OHIO
Orig-A 07354

DAYTON / GREENE COUNTY-LEWIS A. JACKSON RGNL (I19)
39°42'N - 83°59'W

RNAV (GPS) RWY 7