

RNAV (GPS) RWY 36

WEST POINT/MCCHAREN FIELD (M83)

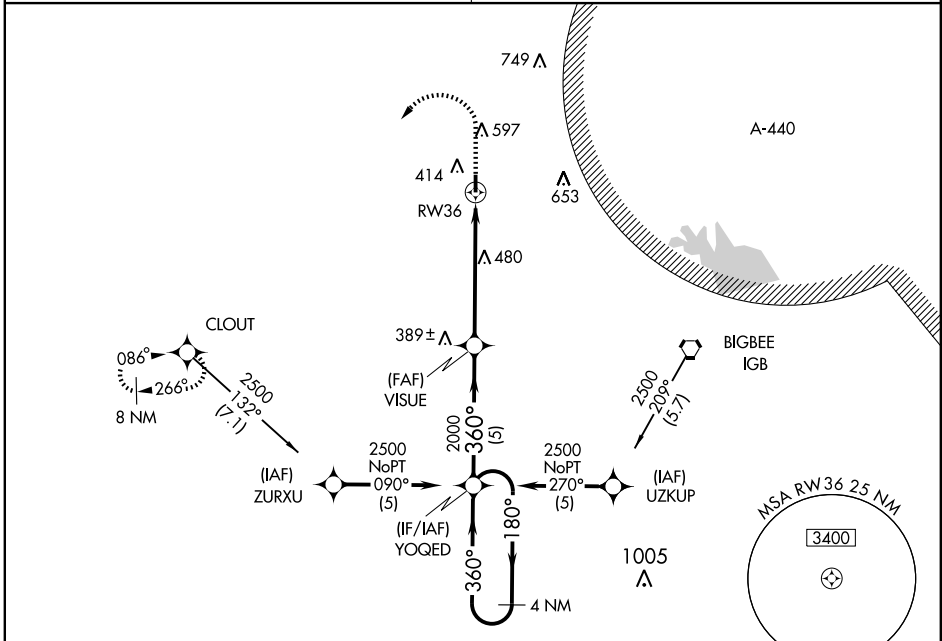
APP CRS	Rwy Idg	3850
360°	TDZE	203
	Apt Elev	205

▽ Use Columbus AFB altimeter setting.
▲NA DME/DME RNP-0.3 NA.

MISSED APPROACH: Climb to 1000 then climbing left turn to 2500 direct CLOUT and hold.

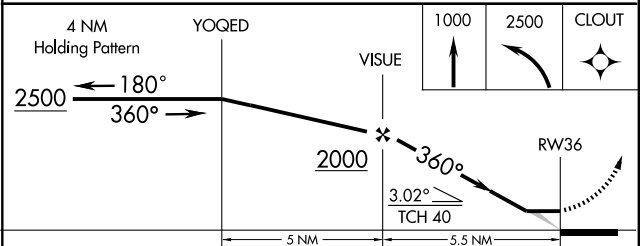
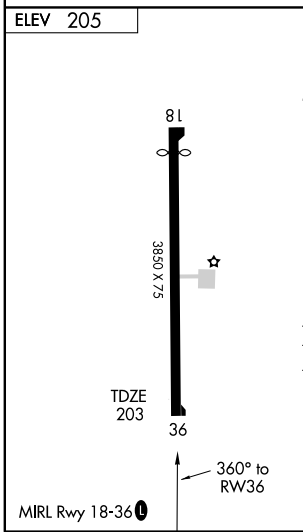
COLUMBUS APP CON * **135.6 323.275**

CTAF **122.9**



SC-4, 22 OCT 2009 to 19 NOV 2009

SC-4, 22 OCT 2009 to 19 NOV 2009



CATEGORY	A	B	C	D
GLS DA		NA		
LNAV/VNAV DA		NA		
LNAV MDA	760-1	557 (600-1)	760-1½ 557 (600-1½)	NA
CIRCLING	920-1 715 (800-1)	1020-1¼ 815 (900-1¼)	1020-2½ 815 (900-2½)	NA