

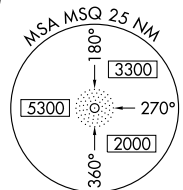
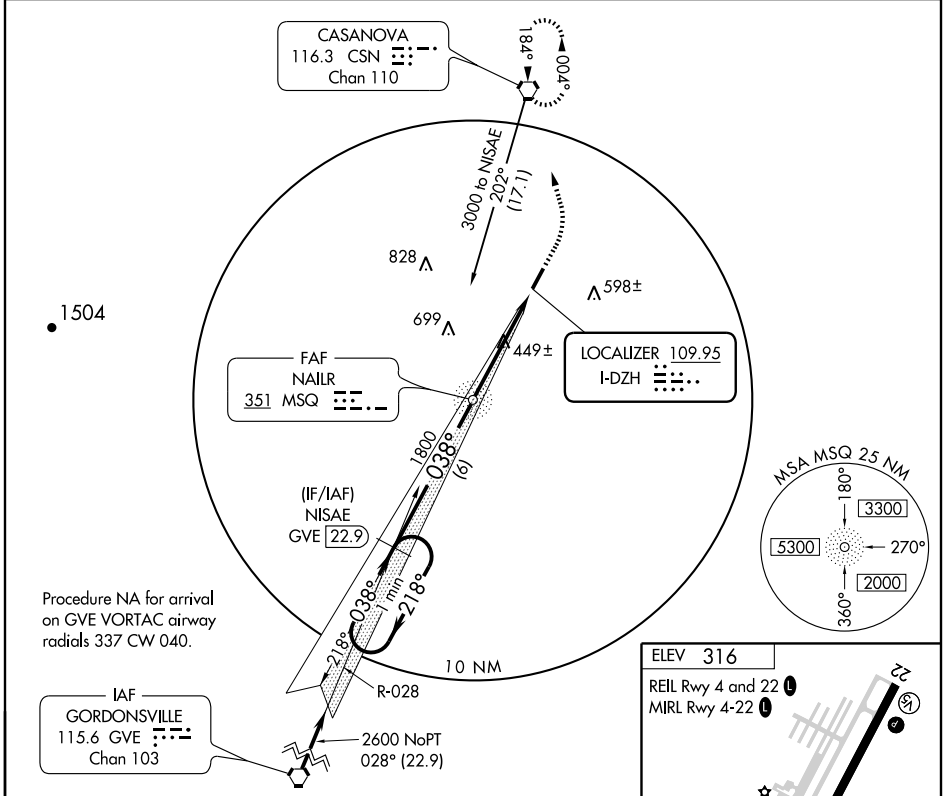
# LOC RWY 4 CULPEPER RGNL (CJR)

LOC I-DZH <b>109.95</b>	APP CRS <b>038°</b>	Rwy Idg TDZE Apt Elev	<b>5000</b> <b>316</b> <b>316</b>
----------------------------	------------------------	-----------------------------	---

**ADF required.**

**MISSED APPROACH:** Climb to 800 then climbing left turn to 3000 direct CSN VORTAC and hold, continue climb-in-hold to 3000.

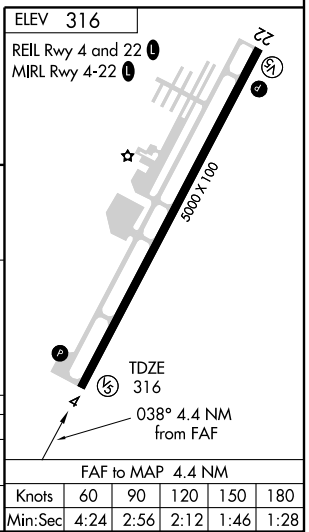
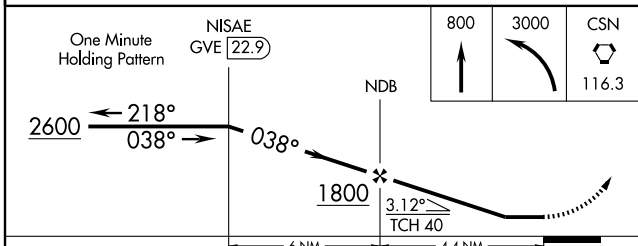
AWOS-3 <b>119.325</b>	POTOMAC APP CON <b>124.65 306.925</b>	GCO <b>135.075</b>	UNICOM <b>123.075 (CTAF)</b>
--------------------------	--	-----------------------	---------------------------------



Procedure NA for arrival on GVE VORTAC airway radials 337 CW 040.

NE-3, 22 OCT 2009 to 19 NOV 2009

NE-3, 22 OCT 2009 to 19 NOV 2009



CATEGORY	A	B	C	D
S-4	700-1	384 (400-1)		NA
CIRCLING	820-1 504 (600-1)	920-1 604 (700-1)	920-1 ¾ 604 (700-1 ¾)	NA

FAC to MAP 4.4 NM	Knots	60	90	120	150	180
	Min:Sec	4:24	2:56	2:12	1:46	1:28