

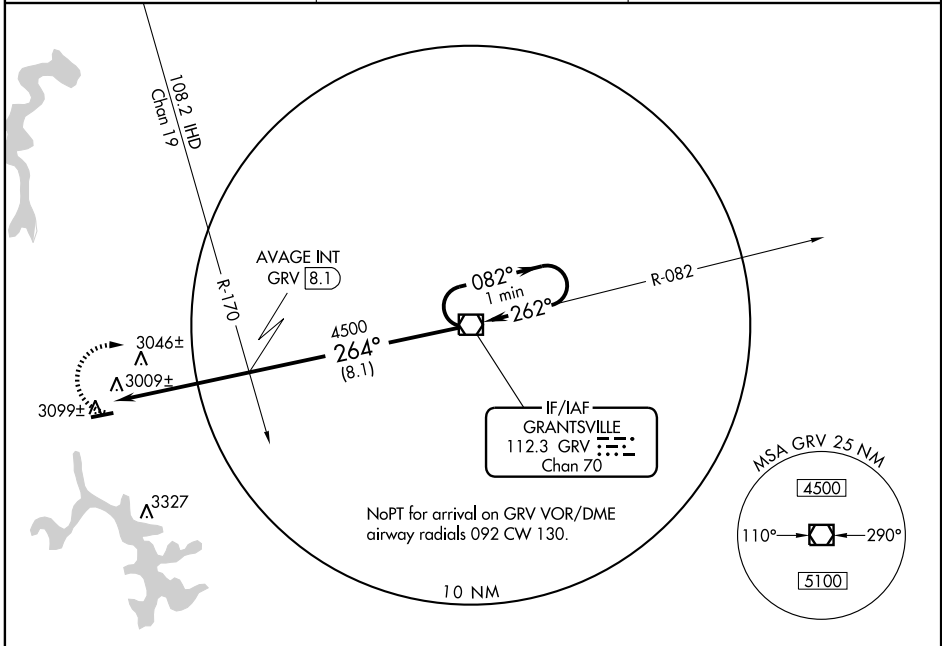
VOR/DME GRV <b>112.3</b> Chan 70	APP CRS <b>264°</b>	Rwy Idg TDZE Apt Elev	<b>5000</b> <b>2925</b> <b>2933</b>
----------------------------------------	------------------------	-----------------------------	-------------------------------------------

**VOR RWY 27**  
OAKLAND/GARRETT COUNTY (2G4)

**▼** When local altimeter setting not received, use Morgantown altimeter setting and increase all MDAs 300 feet, S-27  
**▲ NA** visibility Cat C ¾ mile and Circling Cat B ¾ mile, Cat C ¾ mile.  
 VDP NA when using Morgantown altimeter setting.

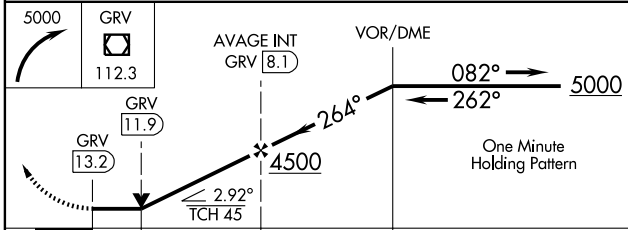
MISSED APPROACH: Climbing right turn to 5000 direct GRV VOR/DME and hold.

AWOS-3 <b>120.125</b>	CLEVELAND CENTER <b>124.4 327.1</b>	UNICOM <b>123.0 (CTAF) 0</b>
--------------------------	----------------------------------------	---------------------------------



NE-3, 22 OCT 2009 to 19 NOV 2009

NE-3, 22 OCT 2009 to 19 NOV 2009



CATEGORY	A	B	C	D
S-27	3340-1	415 (500-1)	3340-1½ 415 (500-1½)	NA
CIRCLING	3400-1	467 (500-1)	3400-1½ 467 (500-1½)	NA

ELEV 2933

264° 5.1 NM from FAF

3103

5000 X 75

TDZE 2925

1.1% UP

REIL Rwy 9 and 27  
MIRL Rwy 9-27 0

FAF to MAP 5.1 NM

Knots	60	90	120	150	180
Min:Sec	5:06	3:24	2:33	2:02	1:42