

RNAV (GPS) RWY 9

OAKLAND / GARRETT COUNTY (2G4)

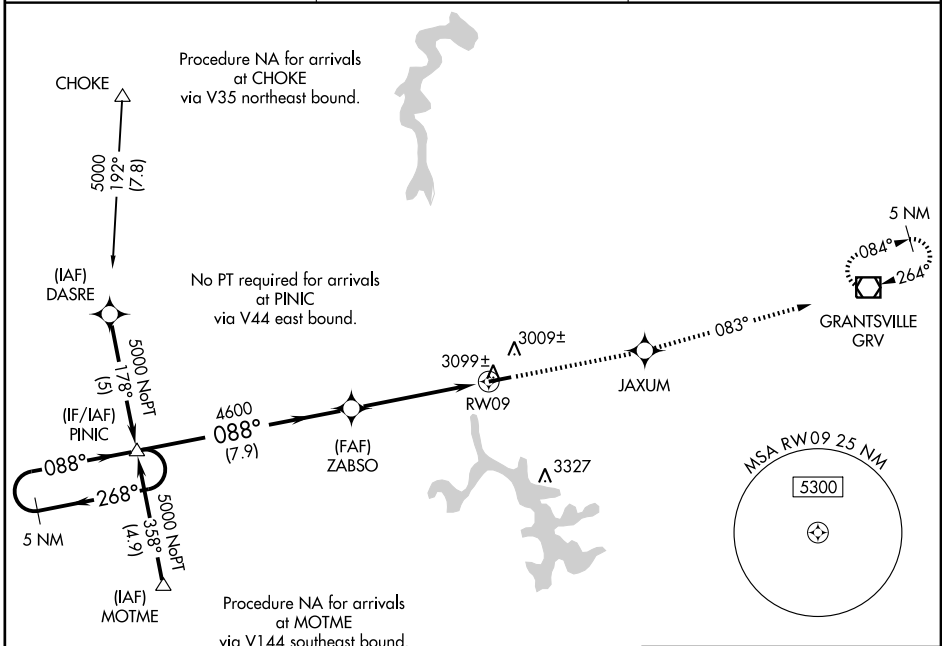
APP CRS	Rwy Idg	5000
088°	TDZE	2933
	Apt Elev	2933

▼ Procedure NA at night. VDP NA when using Morgantown altimeter setting. When local altimeter setting not received, use Morgantown altimeter setting and increase all MDAs 300 feet, LNAV visibility Cat C ¾ mile and Circling Cat B ¾ mile, Cat C ¼ mile. DME/DME RNP-0.3 NA.

▲ NA

MISSED APPROACH: Climb to 5000 direct JAXUM and via 083° track to GRV VOR/DME and hold.

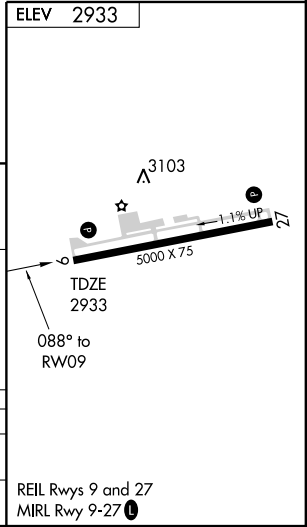
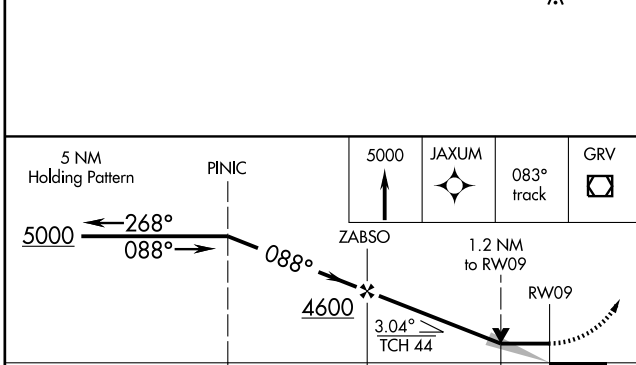
AWOS-3 120.125	CLEVELAND CENTER 124.4 327.1	UNICOM 123.0 (CTAF) 0
--------------------------	--	---------------------------------



NE-3, 22 OCT 2009 to 19 NOV 2009

NE-3, 22 OCT 2009 to 19 NOV 2009

ELEV 2933



CATEGORY	A	B	C	D
LNAV MDA	3360-1	427 (500-1)	3360-1¼ 427 (500-1¼)	NA
CIRCLING	3400-1	467 (500-1)	3400-1½ 467 (500-1½)	NA