

# RNAV (GPS) RWY 27

OAKLAND / GARRETT COUNTY (2G4)

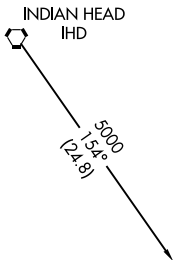
APP CRS <b>268°</b>	Rwy Idg <b>5000</b>
	TDZE <b>2925</b>
	Apt Elev <b>2933</b>

**Procedure NA at night. When local altimeter setting not received, use Morgantown altimeter setting and increase all MDAs 300 feet, LNAV visibility Cat C ¾ mile and Circling Cat B ¾ mile, Cat C ¾ mile. VDP NA when using Morgantown altimeter setting. DME/DME RNP-0.3 NA.**

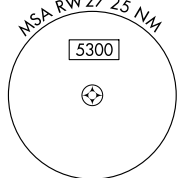
**MISSED APPROACH:** Climbing right turn to 5000 direct GRV VOR/DME and hold.

AWOS-3 <b>120.125</b>	CLEVELAND CENTER <b>124.4 327.1</b>	UNICOM <b>123.0 (CTAF) 0</b>
--------------------------	--	---------------------------------

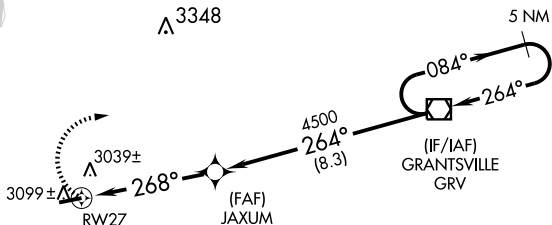
Procedure NA for arrivals on IHD VORTAC airway radials 098 CW 109.



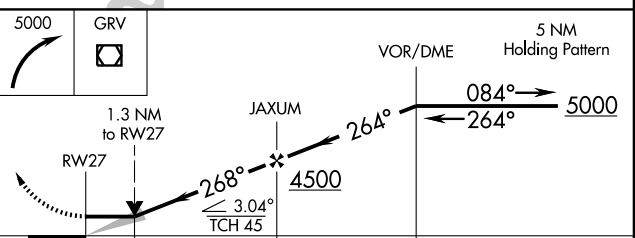
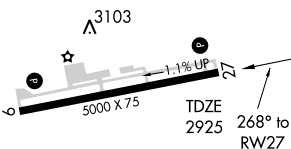
NoPT for arrival on GRV VOR/DME airway radials 092 CW 130.



△ 3348



ELEV 2933



CATEGORY	A	B	C	D
LNAV MDA	3340-1	415 (500-1)	3340-1¼ 415 (500-1¼)	NA
CIRCLING	3400-1	467 (500-1)	3400-1½ 467 (500-1½)	NA

REIL Rws 9 and 27  
MIRL Rwy 9-27 0

NE-3, 22 OCT 2009 to 19 NOV 2009

NE-3, 22 OCT 2009 to 19 NOV 2009