

PLATTEVILLE, WISCONSIN

AL-5875 (FAA)

RNAV (GPS) RWY 7

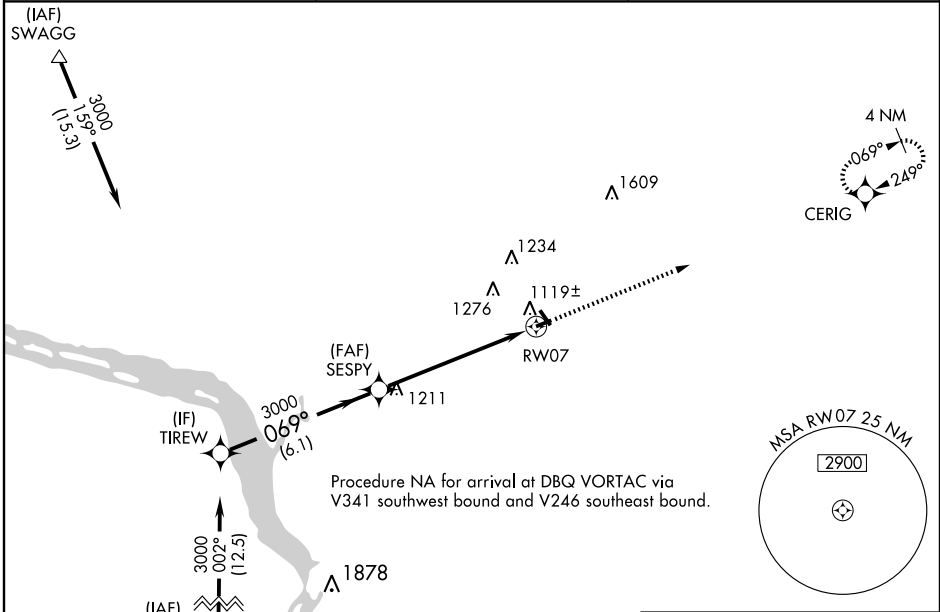
PLATTEVILLE MUNI (PVB)

WAAS CH 82315 W07A	APP CRS 069°	Rwy Idg TDZE Apt Elev	3599 1016 1025
--	------------------------	-----------------------------	---

For uncompensated Baro-VNAV systems, LNAV/VNAV NA below -17°C (2°F) or above 54°C (130°F). DME/DME RNP-0.3 NA. Visibility reduction by helicopters NA. When local altimeter setting not received, use Dubuque altimeter setting and increase all DA 56 feet and all MDA 60 feet, increase LPV all Cats and LNAV Cat C visibility ¼ mile. Baro-VNAV NA when using Dubuque altimeter setting.

MISSED APPROACH:
Climb to 3000 direct CERIG and hold.

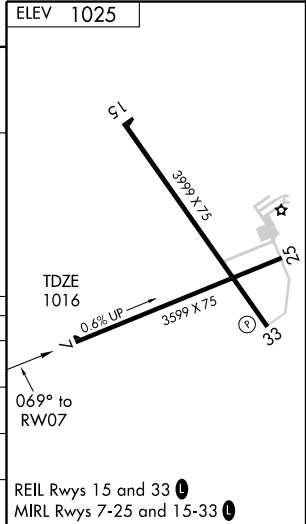
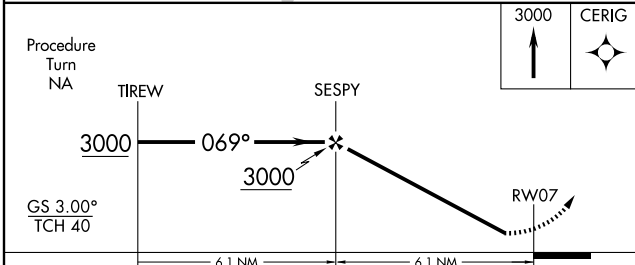
AWOS-3 120.575	CHICAGO CENTER 133.95 281.4	UNICOM 122.7 (CTAF) 0
--------------------------	---------------------------------------	---------------------------------



EC-3, 22 OCT 2009 to 19 NOV 2009

EC-3, 22 OCT 2009 to 19 NOV 2009

ELEV 1025



CATEGORY	A	B	C	D
LPV DA	1266-1	250 (300-1)		NA
LNAV/VNAV DA	1389-1½	373 (400-1½)		NA
LNAV MDA	1380-1	364 (400-1)		NA
CIRCLING	1440-1 415 (500-1)	1480-1 455 (500-1)	1480-1½ 455 (500-1½)	NA

PLATTEVILLE, WISCONSIN
Orig 09295

42°41'N - 90°27'W

PLATTEVILLE MUNI (PVB) RNP (GPS) RWY 7