

BAXLEY, GEORGIA

AL-5873 (FAA)

# NDB RWY 8

BAXLEY MUNI (BHC)

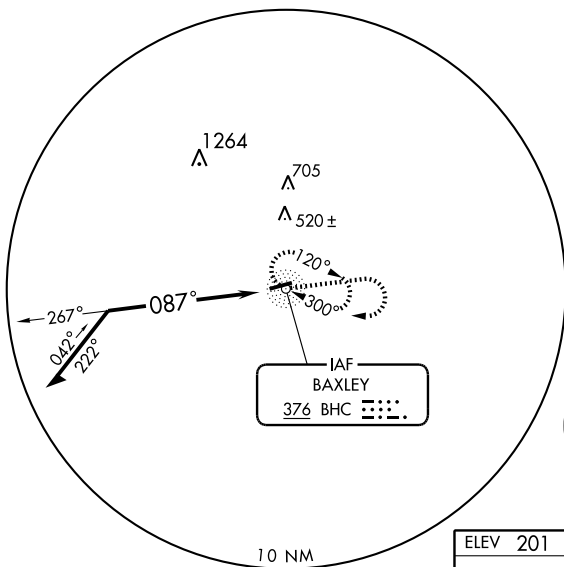
NDB BHC <b>376</b>	APP CRS <b>087°</b>	Rwy Idg <b>5003</b>
		TDZE <b>201</b>
		Apt Elev <b>201</b>

**▼** If local altimeter setting not received, use Alma altimeter setting and increase all MDAs 40 feet.  
**▲ NA** Cat. D circling NA North of Rwy 8-26.

**MISSED APPROACH:** Climb to 1500 then climbing right turn to 2000 direct BHC NDB and hold.

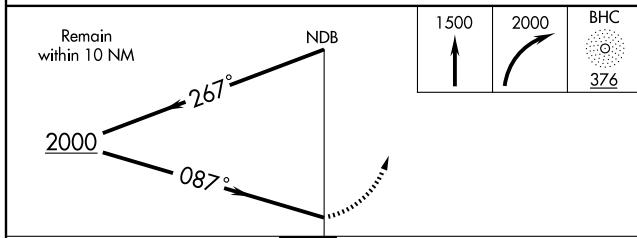
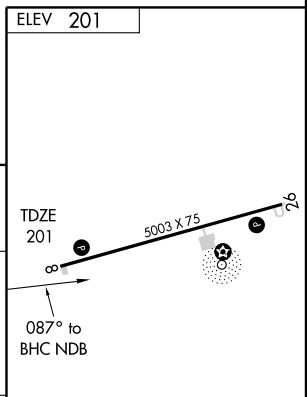
AWOS-A <b>376</b>	JACKSONVILLE CENTER <b>132.3 290.4</b>	UNICOM <b>122.8 (CTAF) 0</b>
----------------------	---	---------------------------------

## RADAR REQUIRED



SE-4, 22 OCT 2009 to 19 NOV 2009

SE-4, 22 OCT 2009 to 19 NOV 2009



CATEGORY	A	B	C	D
S-8	700-1 499 (500-1)		700-1¼ 499 (500-1¼)	700-1½ 499 (500-1½)
CIRCLING	700-1 499 (500-1)		700-1½ 499 (500-1½)	760-2 559 (600-2)

MIRL Rwy 8-26 0

BAXLEY, GEORGIA  
Amdt 1A 08129

31° 43'N-82° 24'W

# BAXLEY MUNI (BHC) NDB RWY 8