

NORFOLK, VIRGINIA

AL-5870 (FAA)

APP CRS	Rwy ldg	3856
292°	TDZE	20
	Apt Elev	23

RNAV (GPS) RWY 28

NORFOLK/HAMPTON ROADS EXECUTIVE (PVG)

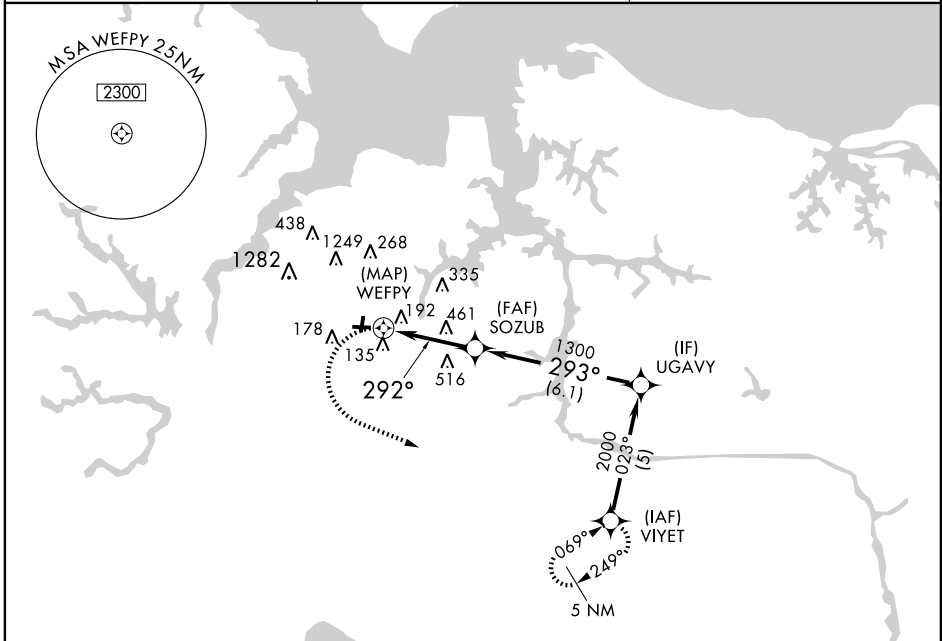
⚠ If local altimeter setting not received, use Norfolk Intl altimeter setting and increase all MDAs 40 feet. Visibility reduction by helicopters NA. **⚠** NA

MISSED APPROACH: Climbing left turn to 2000 direct VIYET and hold.

AWOS-3
118.375

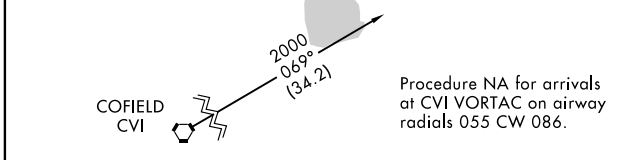
NORFOLK APP CON
118.9 353.7

UNICOM
123.0 (CTAF) 0

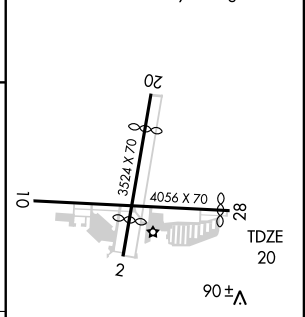
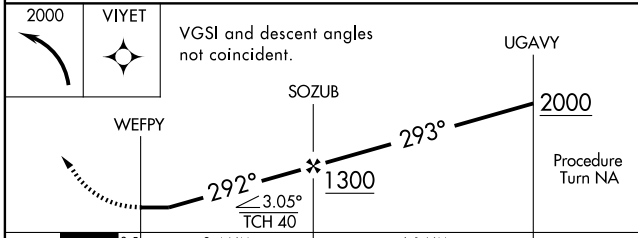


NE-3, 22 OCT 2009 to 19 NOV 2009

NE-3, 22 OCT 2009 to 19 NOV 2009



ELEV 23	Rwy 2 ldg 2626'
	Rwy 20 ldg 2596'
	Rwy 28 ldg 3856'



CATEGORY	A	B	C	D
LNNAV MDA	820-1 800 (800-1)	820-1¼ 800 (800-1¼)	NA	
CIRCLING	820-1 797 (800-1)	820-1¼ 797 (800-1¼)	NA	

MIRL Rwy 2-20 and 10-28 0

NORFOLK, VIRGINIA
Orig 07298

36°47'N - 76°27'W

RNAV (GPS) RWY 28