

NORFOLK, VIRGINIA

AL-5870 (FAA)

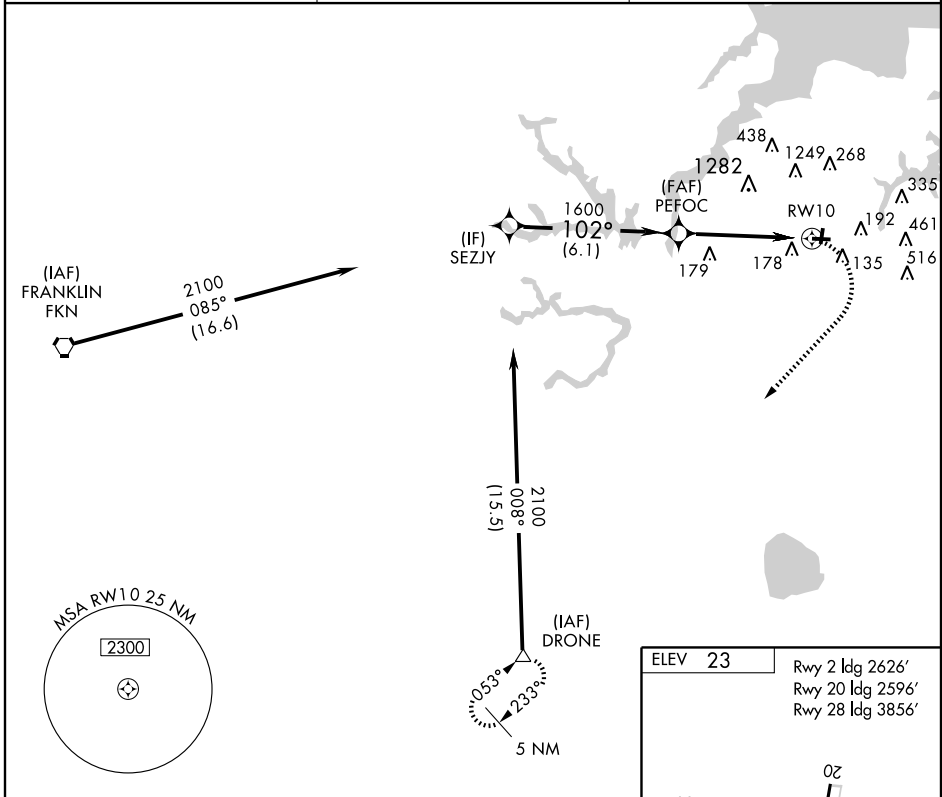
RNAV (GPS) RWY 10

NORFOLK/HAMPTON ROADS EXECUTIVE (PVG)

APP CRS 102°	Rwy ldg 4056 TDZE 20 Apt Elev 23
------------------------	---

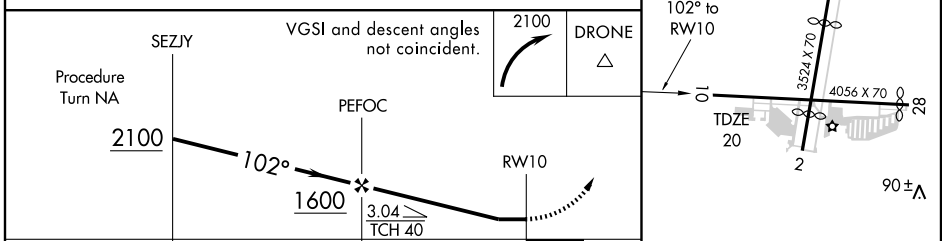
<p>▼ If local altimeter setting not received, use Norfolk Intl altimeter setting and increase all MDAs 40 feet. Visibility reduction by helicopters NA. DME/DME RNP-0.3 NA.</p> <p>▲ NA</p>	<p>MISSED APPROACH: Climbing right turn to 2100 direct DRONE and hold.</p>
---	--

<p>AWOS-3 118.375</p>	<p>NORFOLK APP CON 118.9 353.7</p>	<p>UNICOM 123.0 (CTAF) 0</p>
----------------------------------	---	---

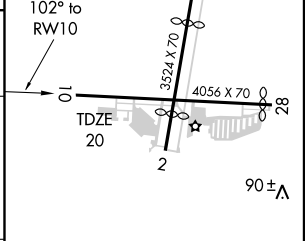


NE-3, 22 OCT 2009 to 19 NOV 2009

NE-3, 22 OCT 2009 to 19 NOV 2009



CATEGORY	A	B	C	D
RNAV MDA	440-1	420 (500-1)		NA
CIRCLING	500-1	477 (500-1)		NA



MIRL Rwy 2-20 and 10-28 0

NORFOLK, VIRGINIA
Orig 07298

NORFOLK/HAMPTON ROADS EXECUTIVE (PVG)
36°47'N - 76°27'W
RNAV (GPS) RWY 10