

NORFOLK, VIRGINIA

AL-5870 (FAA)

NDB RWY 2

NORFOLK/HAMPTON ROADS EXECUTIVE (PVG)

NDB PVG 241	APP CRS 032°	Rwy ldg 2626 TDZE 21 Apt Elev 23
-----------------------	------------------------	---

▽ If local altimeter setting not received, use Norfolk Intl altimeter setting and increase all MDAs 40 feet.
▲ NA
Visibility reduction by helicopters NA.

MISSED APPROACH: Climb to 2300 via 047° bearing from PVG NDB to AYUYO INT, then right turn via PVG NDB 256° course to PVG NDB and hold.

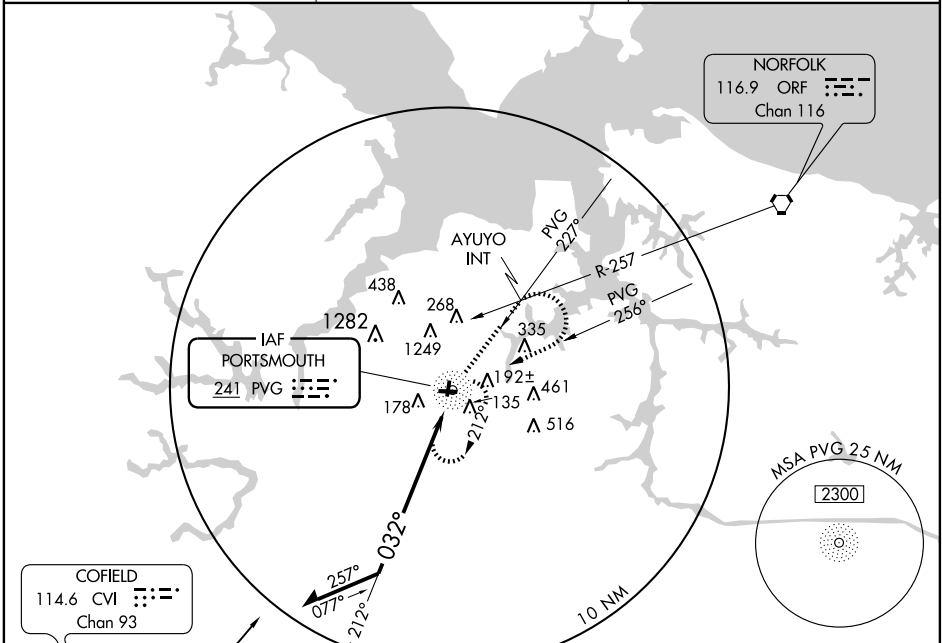
AWOS-3
118.375

NORFOLK APP CON
118.9 353.7

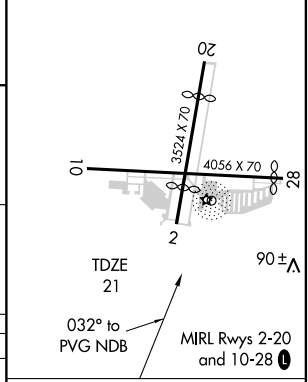
UNICOM
123.0 (CTAF) 0

NE-3, 22 OCT 2009 to 19 NOV 2009

NE-3, 22 OCT 2009 to 19 NOV 2009



ELEV 23	Rwy 2 ldg 2626'
	Rwy 20 ldg 2596'
	Rwy 28 ldg 3856'



Remain within 10 NM	NDB	2300	AYUYO INT	PVG
1600	212°	032°	PVG 047°	PVG 256° CRS 241

CATEGORY	A	B	C	D
S-2	580-1	559 (600-1)	NA	
CIRCLING	580-1	557 (600-1)	NA	

Knots	60	90	120	150	180
Min:Sec					

NORFOLK, VIRGINIA
Amdt 7 07298

NORFOLK/HAMPTON ROADS EXECUTIVE (PVG)
36°47'N - 76°27'W

NDB RWY 2