

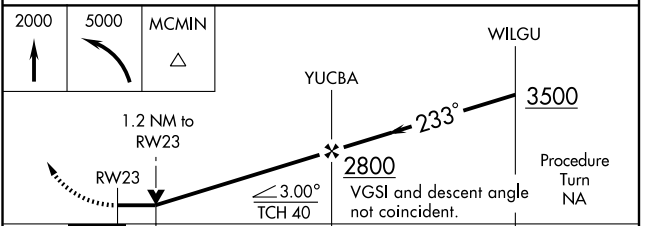
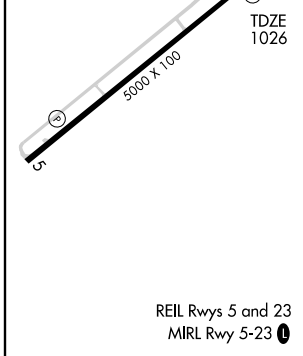
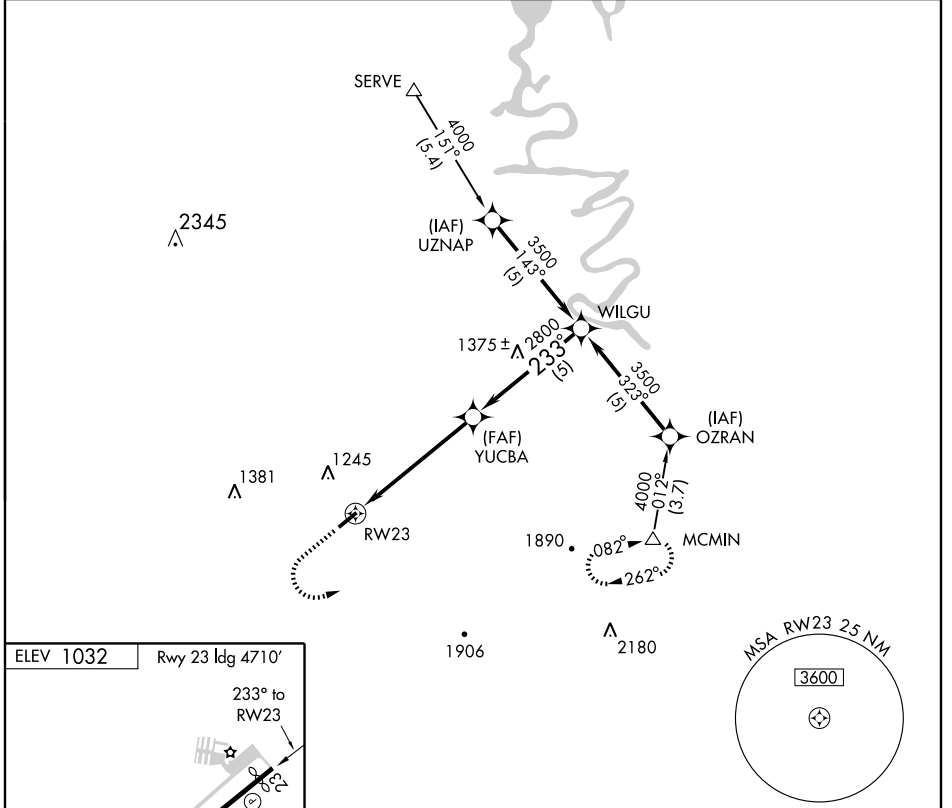
# GPS RWY 23

MC MINNVILLE/ WARREN COUNTY MEMORIAL (RNC)

APP CRS <b>233°</b>	Rwy Idg <b>4710</b>
	TDZE <b>1026</b>
	Apt Elev <b>1032</b>

<b>NA</b>	MISSED APPROACH: Climb to 2000 then climbing left turn to 5000 direct MCMIN WP and hold.		
-----------	--	--	--

AWOS-3 <b>135.525</b>	MEMPHIS CENTER <b>126.75 353.5</b>	GCO <b>121.725</b>	UNICOM <b>122.8</b> (CTAF)
--------------------------	---------------------------------------	-----------------------	-------------------------------



CATEGORY	A	B	C	D
S-23	1440-1	414 (500-1)	1440-1¼	414 (500-1¼)
CIRCLING	1520-1	488 (500-1)	1600-1½ 568 (600-1½)	1660-2 628 (700-2)

# GPS RWY 23

SE-1, 22 OCT 2009 to 19 NOV 2009

SE-1, 22 OCT 2009 to 19 NOV 2009