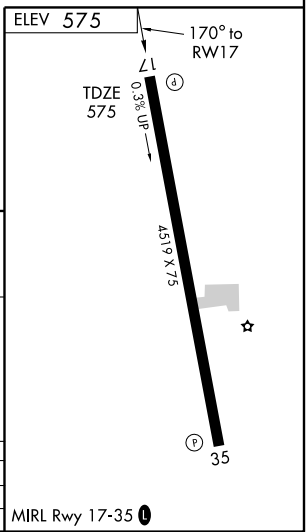
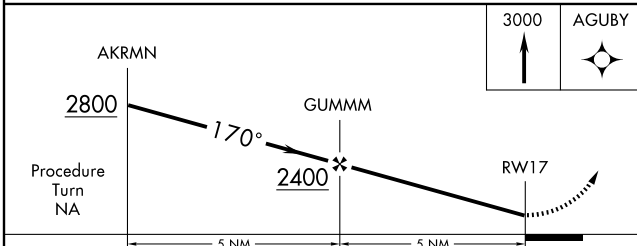
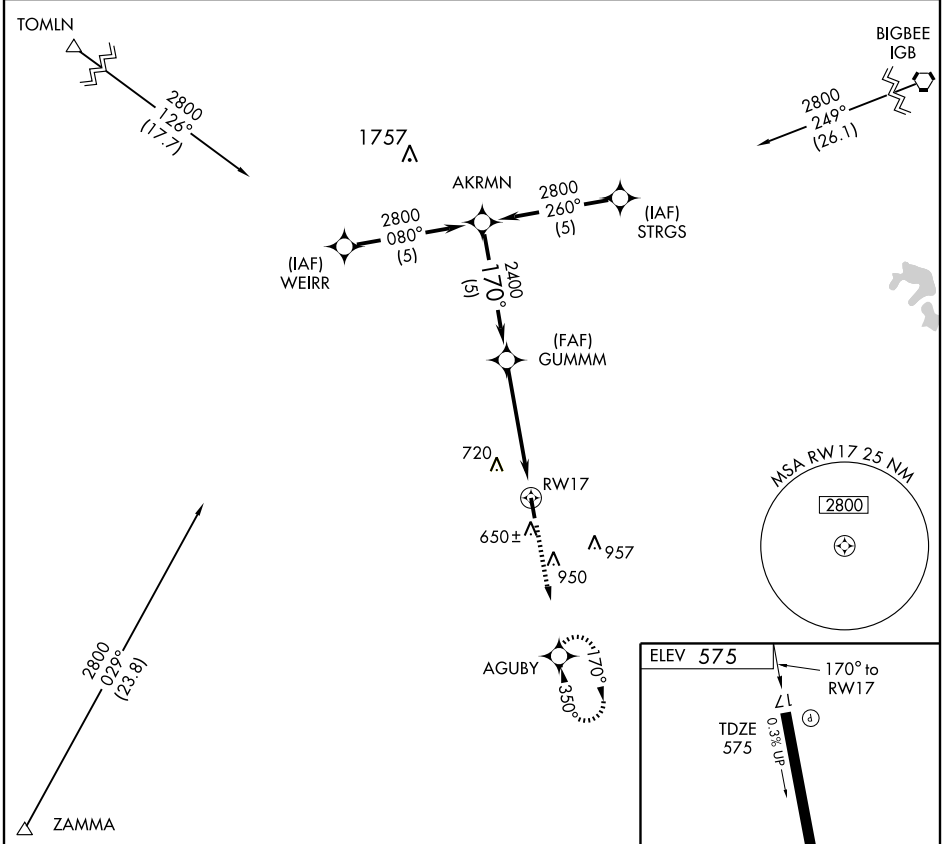


GPS RWY 17
LOUISVILLE-WINSTON COUNTY (LMS)

APP CRS 170°	Rwy Idg 4519
	TDZE 575
	Apt Elev 575

<p>▼ Use Columbus AFB altimeter setting.</p> <p>▲ NA</p>	<p>MISSED APPROACH: Climb to 3000 direct AGUBY WP and hold.</p>
--	---

<p>MEMPHIS CENTER 132.75 263.0</p>	<p>UNICOM 122.7 (CTAF) 0</p>
---	---



CATEGORY	A	B	C	D
S-17	1140-1	565 (600-1)		NA
CIRCLING	1180-1	605 (700-1)		NA

MIRL Rwy 17-35 0

SC-4, 22 OCT 2009 to 19 NOV 2009

SC-4, 22 OCT 2009 to 19 NOV 2009