

RNAV (GPS) RWY 36

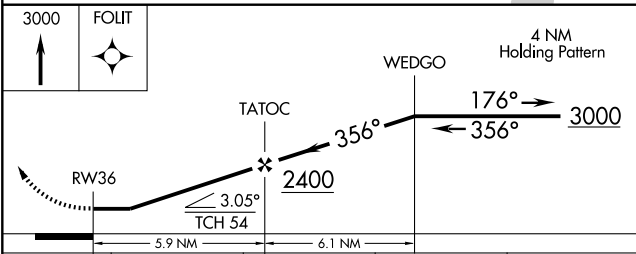
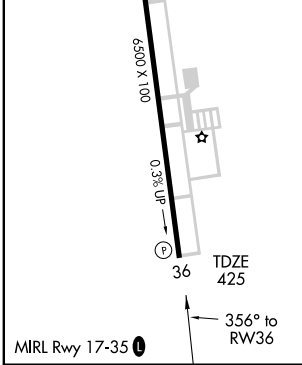
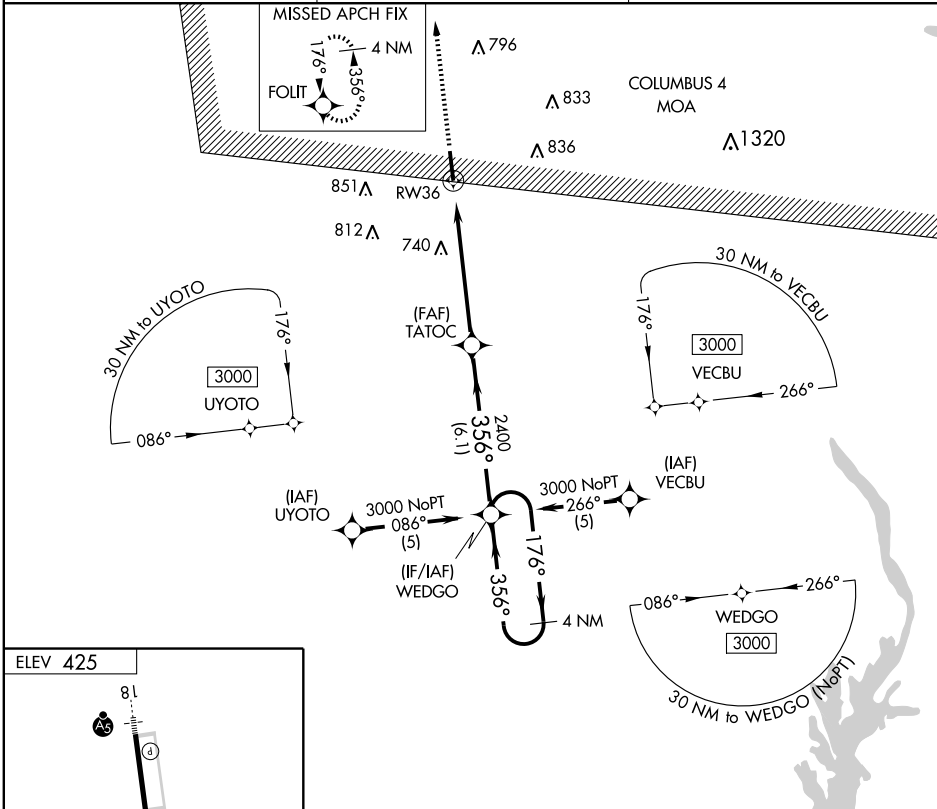
CORINTH/ROSCOE TURNER (CRX)

APP CRS 356°	Rwy Idg 6500
	TDZE 425
	Apt Elev 425

▼ When VGSI inoperative, straight-in/circling Rwy 36 procedure NA at night.
▲ Visibility reduction by helicopters NA. When local altimeter setting not received, use Selmer altimeter setting and increase all MDAs 80 feet; increase all Cat C and D visibilities ¼ mile. DME/DME RNP-0.3 NA.

MISSED APPROACH: Climb to 3000 direct FOLIT and hold.

AWOS-3 118.675	MEMPHIS CENTER 135.9 273.55	UNICOM 122.8 (CTAF) ①
--------------------------	---------------------------------------	---------------------------------



CATEGORY	A	B	C	D
LNAV MDA	1040-1	615 (700-1)	1040-1¾ 615 (700-1¾)	1040-2 615 (700-2)
CIRCLING	1040-1	615 (700-1)	1040-1¾ 615 (700-1¾)	1040-2 615 (700-2)

SC-4, 22 OCT 2009 to 19 NOV 2009

SC-4, 22 OCT 2009 to 19 NOV 2009