


CORINTH, MISSISSIPPI

AL-5867 (FAA)

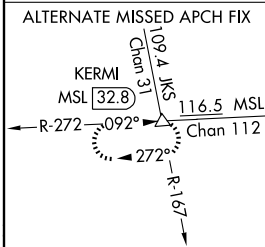
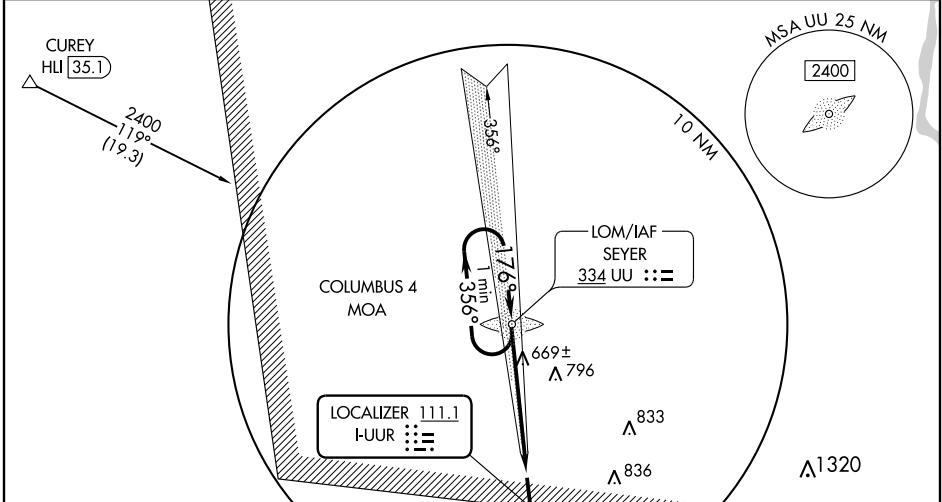
ILS or LOC RWY 18
CORINTH/ROSCOE TURNER (CRX)

LOC I-UUR 111.1	APP CRS 176°	Rwy Idg TDZE Apt Elev	6500 414 425
---------------------------	------------------------	-----------------------------	---

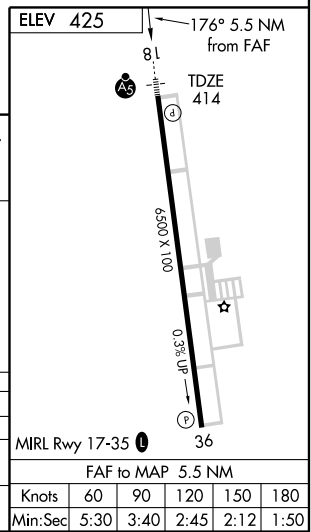
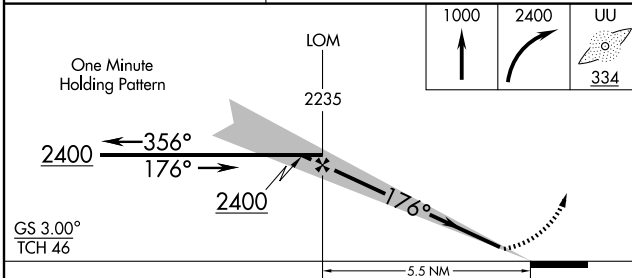
▼ When local altimeter setting not received, use Selmer altimeter setting and increase S-ILS 18 DA to 682, and all MDAs 80 feet; increase S-LOC 18 Cat D visibility ¼ mile. For inoperative MALSR when using Selmer altimeter setting increase S-ILS 18 all Cats visibility to 1 mile. ADF required.

MALSR
 MISSED APPROACH: Climb to 1000 then climbing right turn to 2400 direct UU LOM and hold.

AWOS-3 118.675	MEMPHIS CENTER 135.9 273.55	UNICOM 122.8 (CTAF) 0
--------------------------	---------------------------------------	---------------------------------



ADF REQUIRED



CATEGORY	A	B	C	D
S-ILS 18	614-½		200 (200-½)	
S-LOC 18	920-½	506 (500-½)	920-1 506 (500-1)	
CIRCLING	920-1 495 (500-1)		920-1½ 495 (500-1½)	980-2 555 (600-2)

CORINTH, MISSISSIPPI
Amdt 2 08045

34°55'N-88°36'W

ILS or LOC RWY 18

SC-4, 22 OCT 2009 to 19 NOV 2009

SC-4, 22 OCT 2009 to 19 NOV 2009