

DENTON, TEXAS

AL-5866 (FAA)

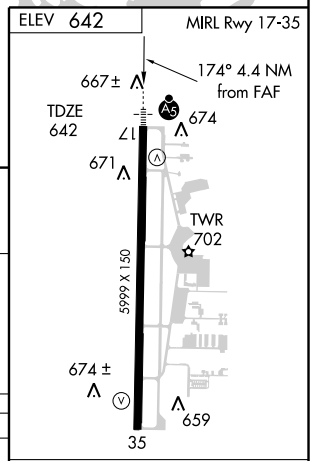
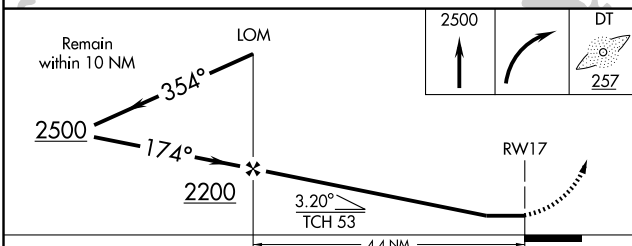
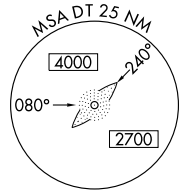
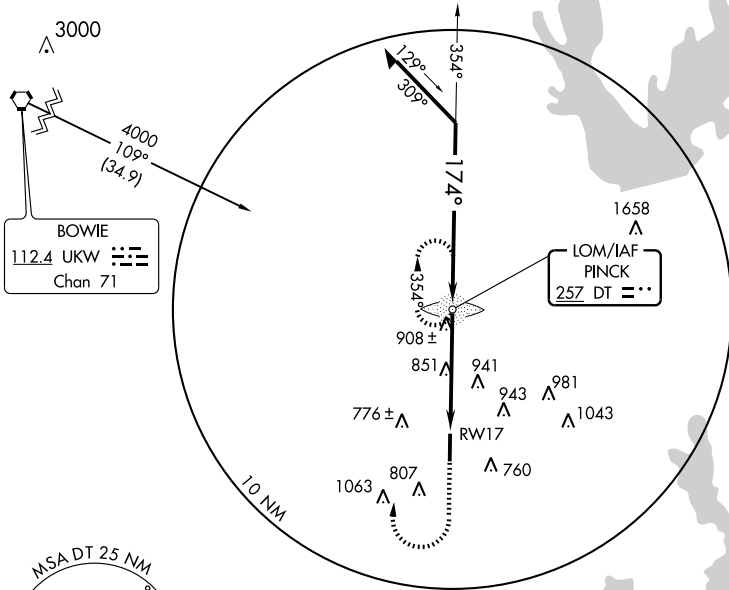
# NDB or GPS RWY 17

DENTON MUNI (D'TO)

LOM DT <b>257</b>	APP CRS <b>174°</b>	Rwy Idg TDZE Apt Elev	<b>5999</b> <b>642</b> <b>642</b>
----------------------	------------------------	-----------------------------	---

<b>NA</b>	MALSR 	MISSED APPROACH: Climb to 2500, then right turn direct DT LOM and hold.
-----------	-----------	---

ASOS <b>119.325</b>	REGIONAL APP CON <b>118.1 306.95</b>	DENTON TOWER* <b>119.95</b> CTAFL	GND CON <b>123.95</b>	CLNC DEL <b>123.95</b>	UNICOM <b>122.95</b>
------------------------	---	--------------------------------------	--------------------------	---------------------------	-------------------------



CATEGORY	A	B	C	D
S-17	1240- $\frac{3}{4}$	598 (600- $\frac{3}{4}$ )	1240-1 598 (600-1)	1240-1 $\frac{1}{2}$ 598 (600-1 $\frac{1}{2}$ )
CIRCLING	1240-1	598 (600-1)	1240-1 $\frac{1}{2}$ 598 (600-1 $\frac{1}{2}$ )	1260-2 618 (700-2)

FAF to MAP 4.4 NM					
Knots	60	90	120	150	180
Min:Sec	4:24	2:56	2:12	1:46	1:28

DENTON, TEXAS  
Amdt 6C 08101

33°12'N-97°12' W

# DENTON MUNI (D'TO)

## NDB or GPS RWY 17

SC-2, 22 OCT 2009 to 19 NOV 2009

SC-2, 22 OCT 2009 to 19 NOV 2009