

TAOS, NEW MEXICO

AL-5863 (FAA)

VOR/DME-B
TAOS RGNL (SKX)

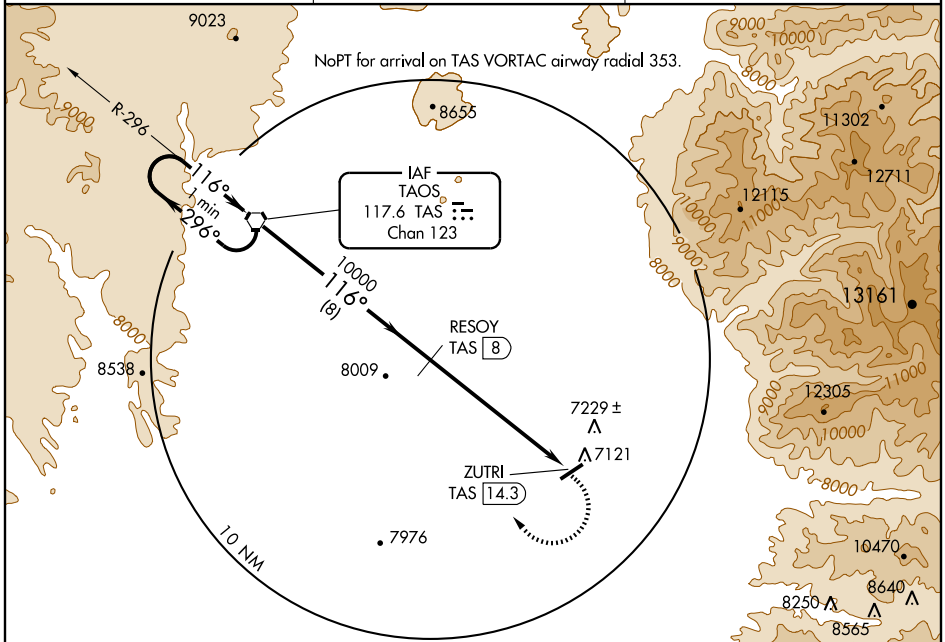
VORTAC TAS 117.6 Chan 123	APP CRS 116°	Rwy Idg TDZE Apt Elev	N/A N/A 7091
---	------------------------	-----------------------------	---

MISSED APPROACH: Climbing right turn to 12000 direct TAS VORTAC and hold.

AWOS-3
132.975

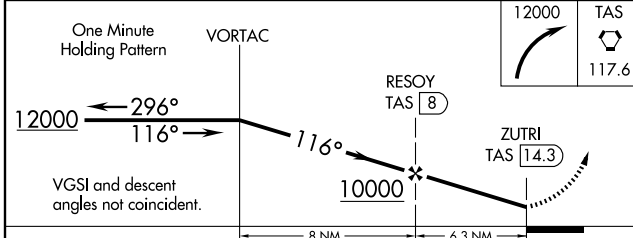
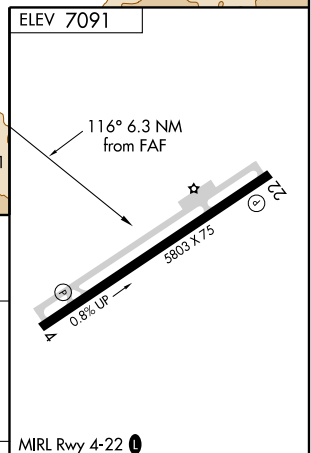
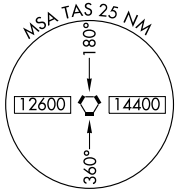
ALBUQUERQUE RADIO
122.1R

UNICOM
122.8 (CTAF)



SW-1, 22 OCT 2009 to 19 NOV 2009

SW-1, 22 OCT 2009 to 19 NOV 2009



CATEGORY	A	B	C	D	MIRL Rwy 4-22
CIRCLING	8000-1¼	909 (1000-1¼)	8000-2¾	8000-3	
			909 (1000-2¾)	909 (1000-3)	
					Knots 60 90 120 150 180
					Min:Sec

TAOS, NEW MEXICO
Amdt 3 08157

36°27'N-105°40'W

TAOS RGNL (SKX)
VOR/DME-B