

LOC I-UNI	APP CRS	Rwy Idg	5600
108.75	247°	TDZE	765
		Apt Elev	766

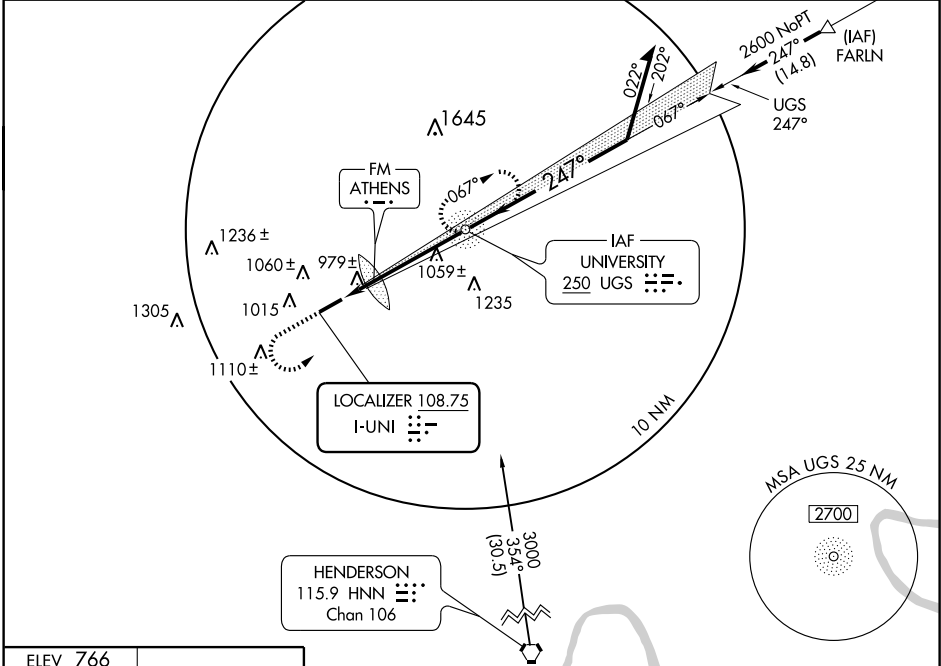
ILS or LOC RWY 25

ATHENS (ALBANY)/ OHIO UNIVERSITY SNYDER FIELD (UNI)

ADF REQUIRED
 ▲ NA If local altimeter setting not received, use Parkersburg, WV altimeter setting and increase all DH's and MDA's 100 feet.

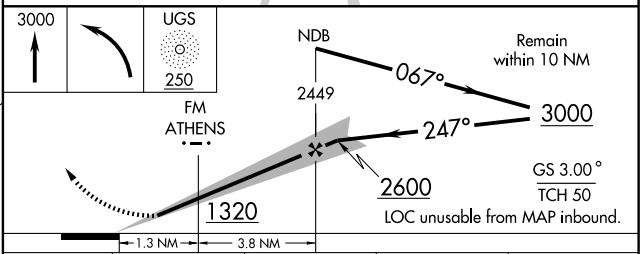
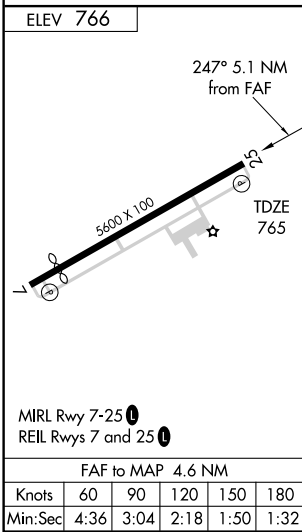
MISSED APPROACH: Climb to 3000, then left turn direct UGS NDB and hold.

AWOS-3 128.325	HUNTINGTON APP CON 120.95 270.1	CLNC DEL 120.95	UNICOM 123.075 (CTAF) 0
--------------------------	---	---------------------------	-----------------------------------



EC-2, 22 OCT 2009 to 19 NOV 2009

EC-2, 22 OCT 2009 to 19 NOV 2009



CATEGORY	A	B	C	D
S-ILS 25	974-1 209 (300-1)			
S-LOC 25	1320-1	555 (600-1)	1320-1½ 555 (600-1½)	1320-1¾ 555 (600-1¾)
CIRCLING	1380-1 614 (700-1)	1420-1 654 (700-1)	1420-1¾ 654 (700-1¾)	1420-2 654 (700-2)
FM MINIMUMS				
S-LOC 25	1240-1	475 (500-1)	1240-1¼ 475 (500-1¼)	1240-1½ 475 (500-1½)
CIRCLING	1380-1 614 (700-1)	1420-1 654 (700-1)	1420-1¾ 654 (700-1¾)	1420-2 654 (700-2)