

RNAV (GPS) RWY 18

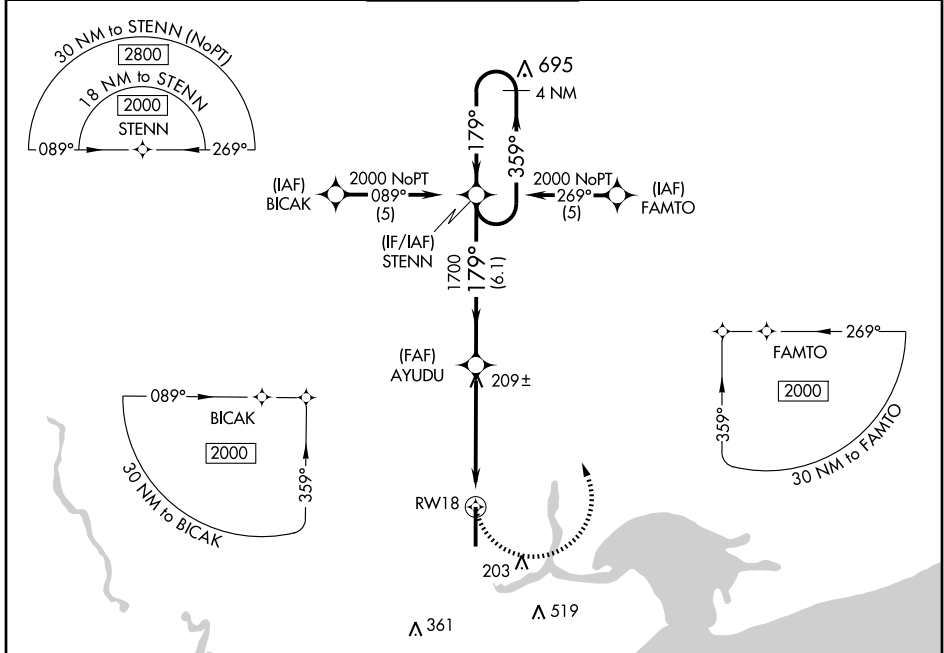
BAY ST. LOUIS / STENNIS INTL (HSA)

APP CRS 179°	Rwy Idg 8497
	TDZE 23
	Apt Elev 23

⚠ If local altimeter setting not received, use Gulfport altimeter setting and increase all MDAs 60 feet. DME/DME RNP-0.3 NA. VDP NA when using Gulfport altimeter setting.

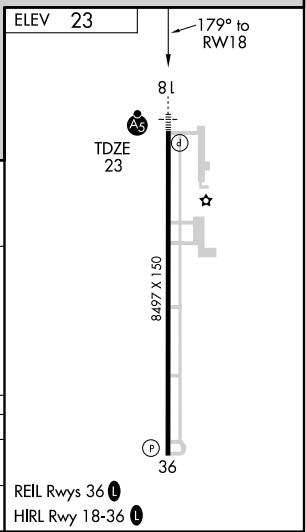
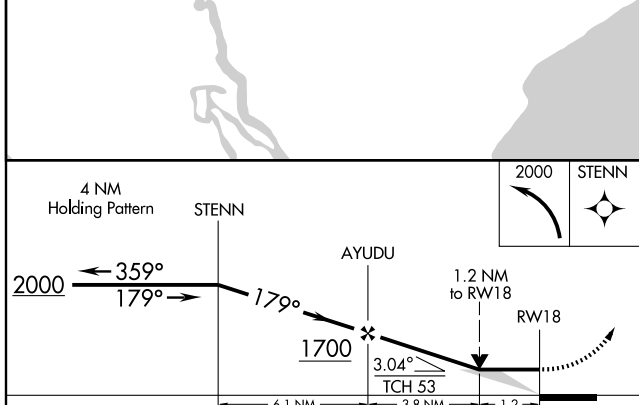
MALSR
AS
MISSED APPROACH: Climbing left turn to 2000 direct STENN and hold.

AWOS-3 118.375	GULFPORT APP CON* 124.6 354.1	STENNIS TOWER* 127.15 AS	GND CON 121.725	UNICOM 123.0 (CTAF) 0
--------------------------	---	------------------------------------	---------------------------	---------------------------------



SC-4, 22 OCT 2009 to 19 NOV 2009

SC-4, 22 OCT 2009 to 19 NOV 2009



CATEGORY	A	B	C	D
LNVA MDA	460-1/2	437 (500-1/2)	460-3/4 437 (500-3/4)	460-1 437 (500-1)
CIRCLING	460-1 437 (500-1)	480-1 457 (500-1)	480-1 1/2 457 (500-1 1/2)	580-2 557 (600-2)

REIL Rwy 36 0
HIRL Rwy 18-36 0