

FRYEBURG, MAINE

AL-5857 (FAA)

APP CRS <b>324°</b>	Rwy Idg <b>4200</b>
	TDZE <b>447</b>
	Apt Elev <b>454</b>

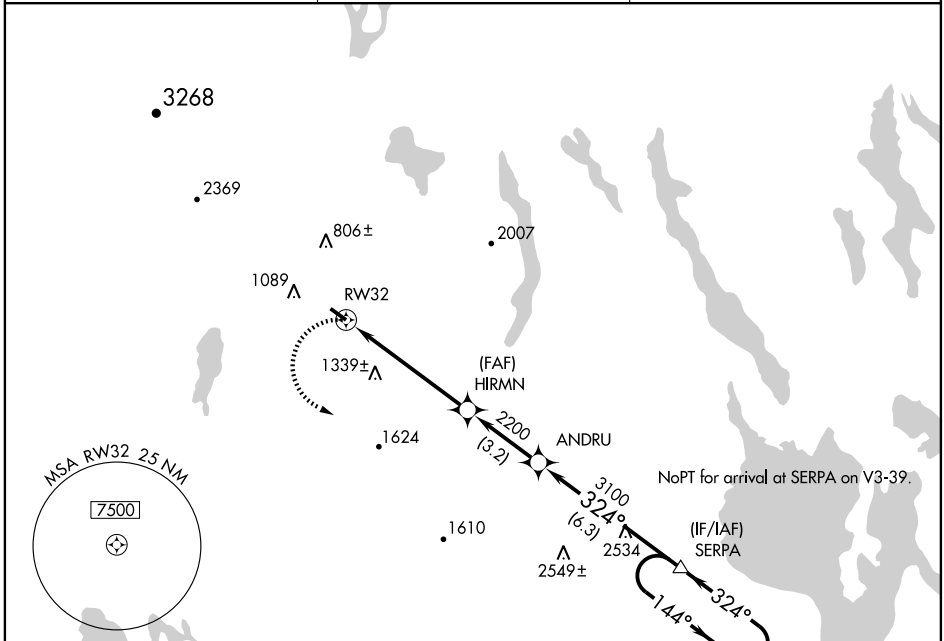
# RNAV (GPS) RWY 32

FRYEBURG/ EASTERN SLOPES RGNL (IZG)

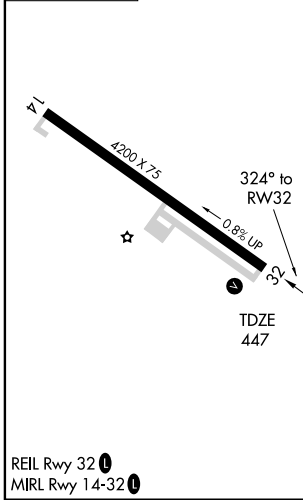
**⚠** DME/DME RNP-0.3 NA. Visibility reduction by helicopters NA. When local altimeter setting not received, use Auburn/Lewiston altimeter setting and increase all MDA 100 feet.

**⚠** MISSED APPROACH: Climbing left turn to 3600 direct SERPA and hold.

ASOS <b>135.775</b>	PORTLAND APP CON * <b>125.5 381.2</b>	UNICOM <b>122.8 (CTAF) 0</b>
------------------------	--	---------------------------------



ELEV 454



3600	SERPA	VGSI and descent angles not coincident.	SERPA	4 NM Holding Pattern
			ANDRU	
			HIRMN	
			RW32	
			2200	
			3100	
			324°	
			144°	
			3600	
			324°	
			3.04°	
			TCH 30	
			5.4 NM	
			3.2 NM	
			6.3 NM	
CATEGORY	A	B	C	D
LNAV MDA	1480-1¼ 1033 (1100-1¼)	1480-1½ 1033 (1100-1½)	1480-3 1033 (1100-3)	NA
CIRCLING	1480-1¼ 1026 (1100-1¼)	1480-1½ 1026 (1100-1½)	1480-3 1026 (1100-3)	NA

FRYEBURG, MAINE  
Orig 09127

43°59'N - 70°57'W

# RNAV (GPS) RWY 32

NE-1, 22 OCT 2009 to 19 NOV 2009

NE-1, 22 OCT 2009 to 19 NOV 2009