

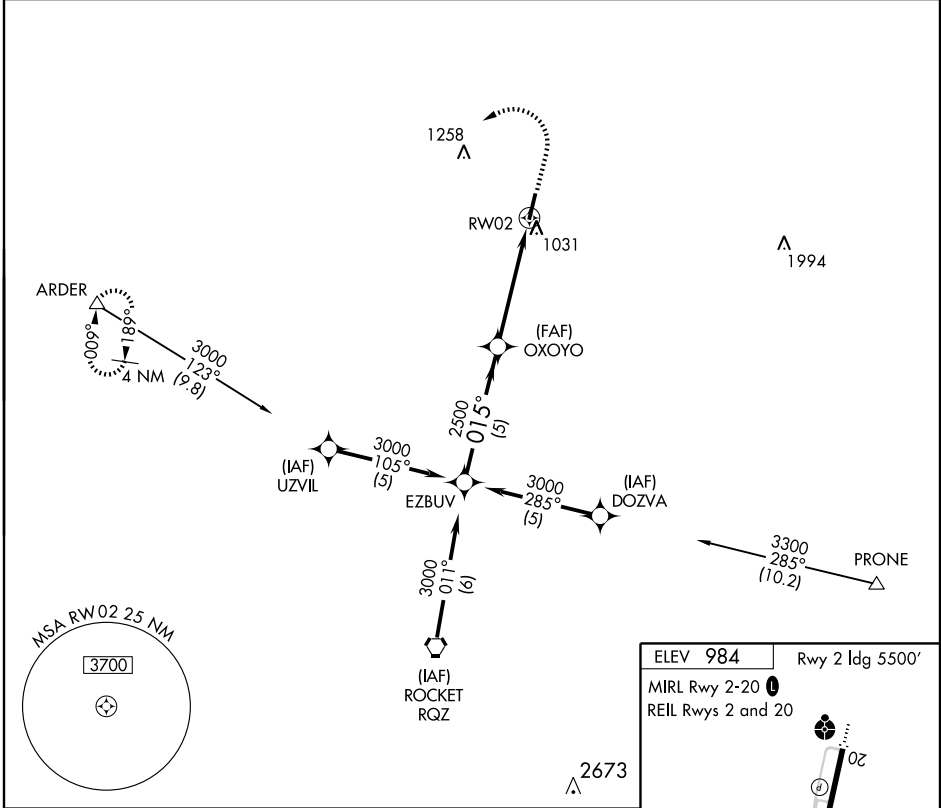
GPS RWY 2

FAYETTEVILLE MUNI (FYM)

APP CRS	Rwy Idg	5500
015°	TDZE	973
	Apt Elev	984

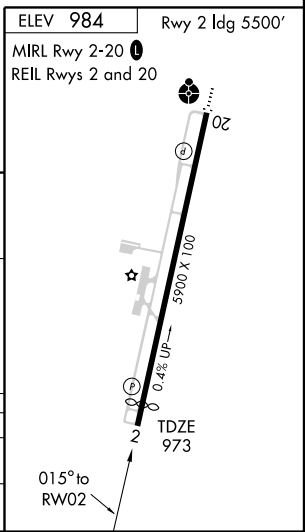
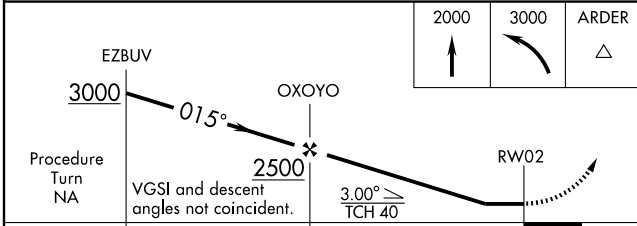
	MISSED APPROACH: Climb to 2000 then climbing left turn to 3000 direct ARDER WP and hold.
--	--

AWOS-3 135.275	HUNTSVILLE APP CON * 125.6 354.1	GCO 121.725	UNICOM 122.8 (CTAF)
--------------------------	--	-----------------------	-------------------------------



SE-1, 22 OCT 2009 to 19 NOV 2009

SE-1, 22 OCT 2009 to 19 NOV 2009



CATEGORY	A	B	C	D
S-2	1380-1	407 (400-1)	1380-1¼	407 (400-1¼)
CIRCLING	1440-1 456 (500-1)	1540-1 556 (600-1)	1540-1½ 556 (600-1½)	1540-2 556 (600-2)