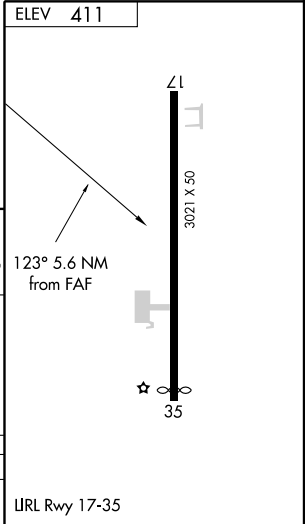
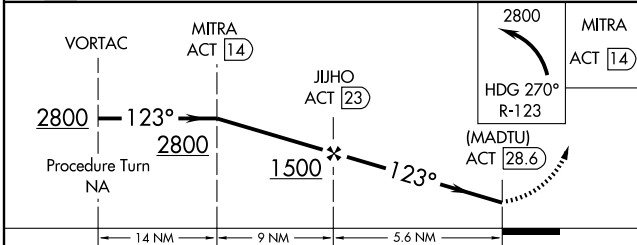
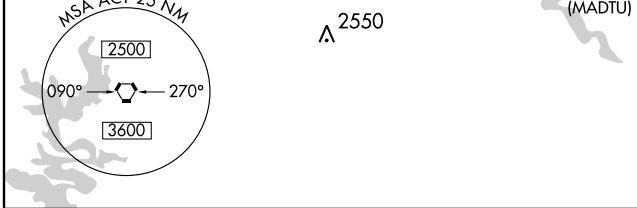
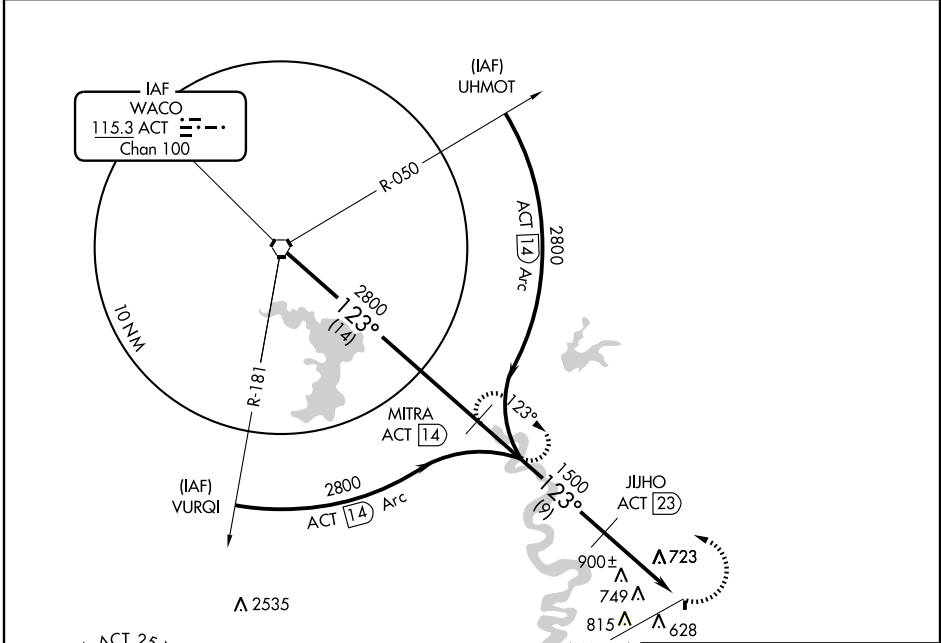


# VOR/DME or GPS-A MARLIN (T15)

VOR ACT <b>115.3</b> Chan <b>100</b>	APP CRS <b>123°</b>	Rwy Idg TDZE Apt Elev <b>N/A</b> <b>N/A</b> <b>411</b>
--	------------------------	---

<b>▲</b> NA Use Waco Rgnl altimeter setting.	MISSED APPROACH: Climbing left turn to 2800 via heading 270° and R-123 to MITRA/14 DME and hold.
WACO APP CON ★ <b>135.2 352.0</b>	CTAF <b>120.0</b>



CATEGORY	A	B	C	D
CIRCLING	1280-1 869 (900-1)	1280-1¼ 869 (900-1¼)	NA	NA

SC-5, 22 OCT 2009 to 19 NOV 2009

SC-5, 22 OCT 2009 to 19 NOV 2009