

VOR/DME-A

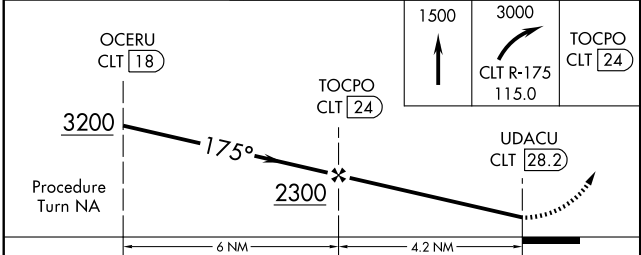
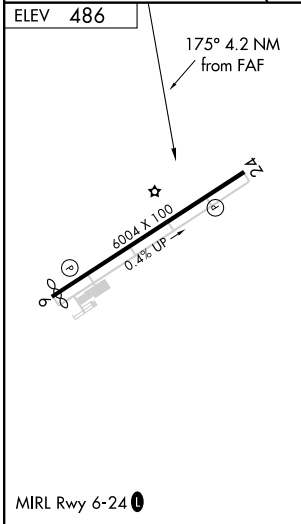
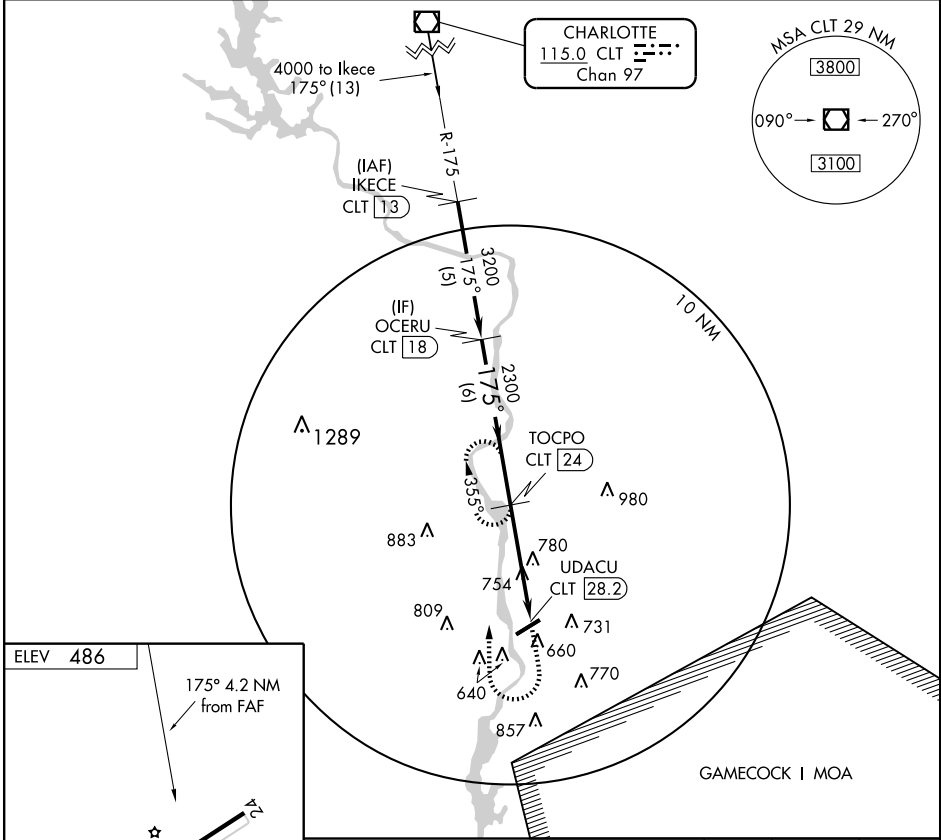
LANCASTER COUNTY-McWHIRTER FIELD (LKR)

APP CRS 175°	Rwy Idg TDZE Apt Elev	N/A N/A 486
------------------------	-----------------------------	--

NA If local altimeter setting not received, use Charlotte altimeter setting and increase all MDAs 120 feet.

MISSED APPROACH: Climb to 1500 then climbing right turn to 3000 via CLT VOR/DME R-175 to TOCPO/CLT VOR/DME 24 DME and hold, continue climb-in-hold to 3000.

AWOS-3 120.825	CHARLOTTE APP CON 120.05 307.8	GCO 121.725	UNICOM 122.725 (CTAF) 0
--------------------------	--	-----------------------	--



CATEGORY	A	B	C	D
CIRCLING	1340-1 854 (900-1)	1340-1¼ 854 (900-1¼)	1340-2½ 854 (900-2½)	1340-2¾ 854 (900-2¾)

SE-2, 22 OCT 2009 to 19 NOV 2009

SE-2, 22 OCT 2009 to 19 NOV 2009