

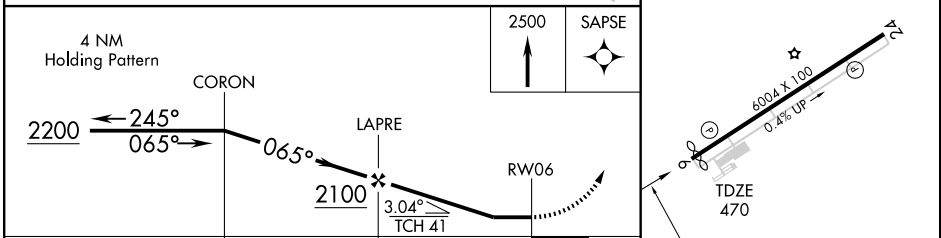
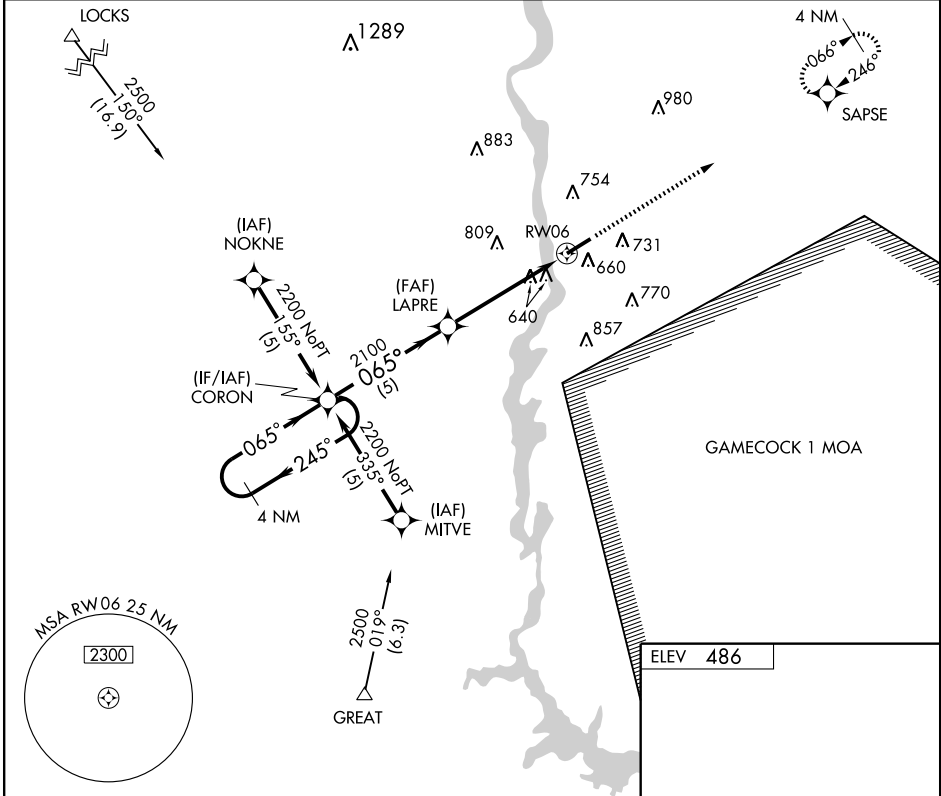
RNAV (GPS) RWY 6

LANCASTER COUNTY-McWHIRTER FIELD (LKR)

APP CRS 065°	Rwy Idg 5899 TDZE 470 Apt Elev 486
------------------------	---

<p>▼ Use Charlotte altimeter setting. ▲ NA GPS or RNP-0.3 Required. DME/DME RNP-0.3 NA.</p>	<p>MISSED APPROACH: Climb to 2500 direct to SAPSE WP and hold.</p>
---	--

AWOS-3 120.825	CHARLOTTE APP CON 120.05 307.8	GCO 121.725	UNICOM 122.725 (CTAF) 0
--------------------------	--	-----------------------	--



CATEGORY	A	B	C	D
RNAV MDA	1040-1	570 (600-1)	1040-1½ 570 (600-1½)	1040-1¾ 570 (600-1¾)
CIRCLING	1160-1	674 (700-1)	1160-2 674 (700-2)	1200-2¼ 714 (800-2¼)

SE-2, 22 OCT 2009 to 19 NOV 2009

SE-2, 22 OCT 2009 to 19 NOV 2009