

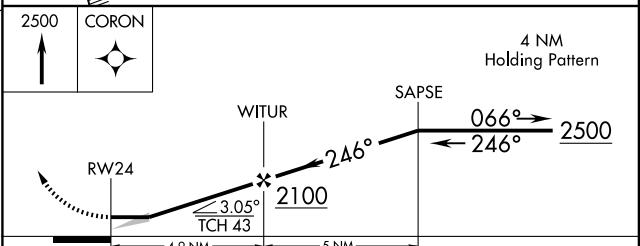
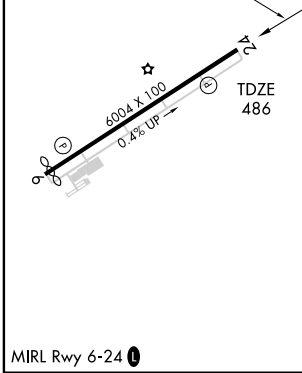
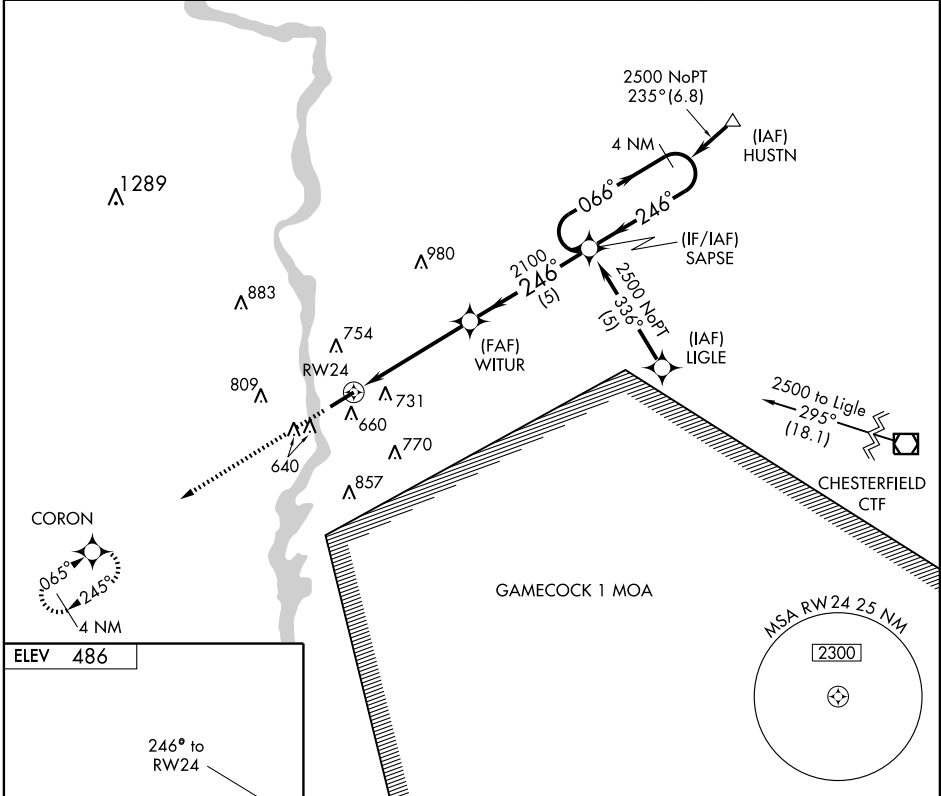
# RNAV (GPS) RWY 24

LANCASTER COUNTY-McWHIRTER FIELD (LKR)

APP CRS <b>246°</b>	Rwy Idg <b>6004</b>
	TDZE <b>486</b>
	Apt Elev <b>486</b>

<p><b>▼</b> Use Charlotte altimeter setting.  <b>▲</b> NA GPS or RNP-0.3 Required.          DME/DME RNP-0.3 NA.</p>	<p>MISSED APPROACH: Climb to 2500          direct to CORON WP and hold.</p>
---	---

AWOS-3 <b>120.825</b>	CHARLOTTE APP CON <b>120.05 307.8</b>	GCO <b>121.725</b>	UNICOM <b>122.725 (CTAF) 0</b>
--------------------------	--	-----------------------	-----------------------------------



CATEGORY	A	B	C	D
LNAV MDA	1060-1	574 (600-1)	1060-1½ 574 (600-1½)	1060-1¾ 574 (600-1¾)
CIRCLING	1160-1	674 (700-1)	1160-2 674 (700-2)	1200-2¼ 714 (800-2¼)

SE-2, 22 OCT 2009 to 19 NOV 2009

SE-2, 22 OCT 2009 to 19 NOV 2009