

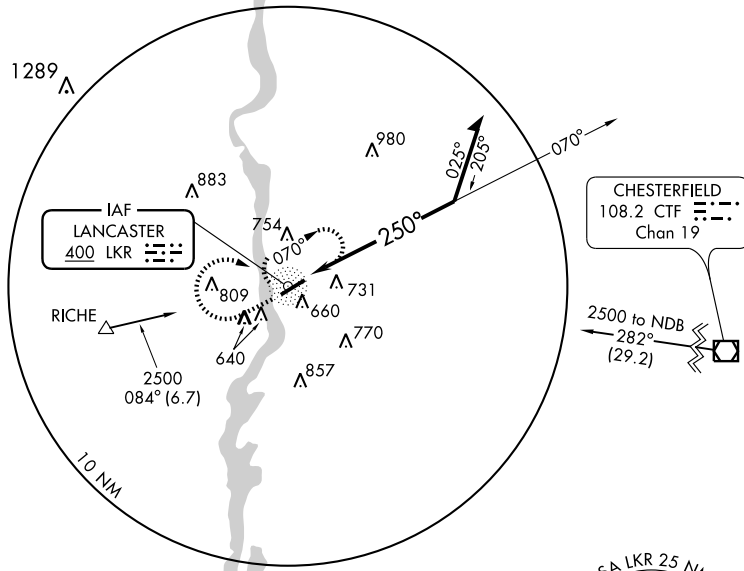
NDB RWY 24

LANCASTER COUNTY-McWHIRTER FIELD (LKR)

NDB LKR 400	APP CRS 250°	Rwy Idg 6004
		TDZE 486
		Apt Elev 486

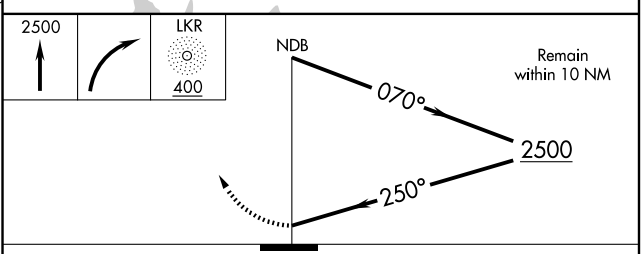
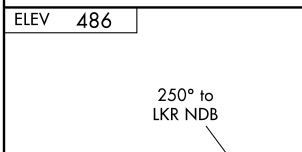
<p>Use Charlotte altimeter setting.</p>	<p>MISSED APPROACH: Climb to 2500 then turn right direct LKR NDB and hold.</p>
---	--

AWOS-3 120.825	CHARLOTTE APP CON 120.05 307.8	GCO 121.725	UNICOM 122.725 (CTAF)
--------------------------	--	-----------------------	---------------------------------



SE-2, 22 OCT 2009 to 19 NOV 2009

SE-2, 22 OCT 2009 to 19 NOV 2009



CATEGORY	A	B	C	D
S-24	1260-1 774 (800-1)	1260-1¼ 774 (800-1¼)	1260-2¼ 774 (800-2¼)	1260-2½ 774 (800-2½)
CIRCLING	1260-1 774 (800-1)	1260-1¼ 774 (800-1¼)	1260-2¼ 774 (800-2¼)	1260-2½ 774 (800-2½)