

VORTAC ARG 114.5 Chan 92	APP CRS 355°	Rwy Idg TDZE Apt Elev	3999 271 271
----------------------------------------------	------------------------	-----------------------------	-----------------------------------------

VOR or GPS RWY 36

POCAHONTAS/ POCAHONTAS MUNI (M70)

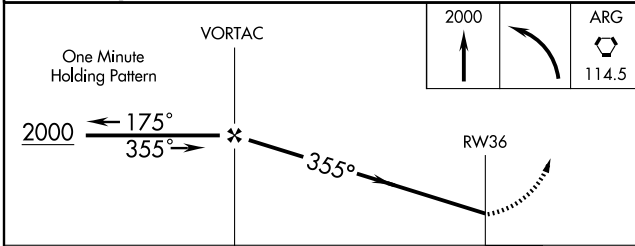
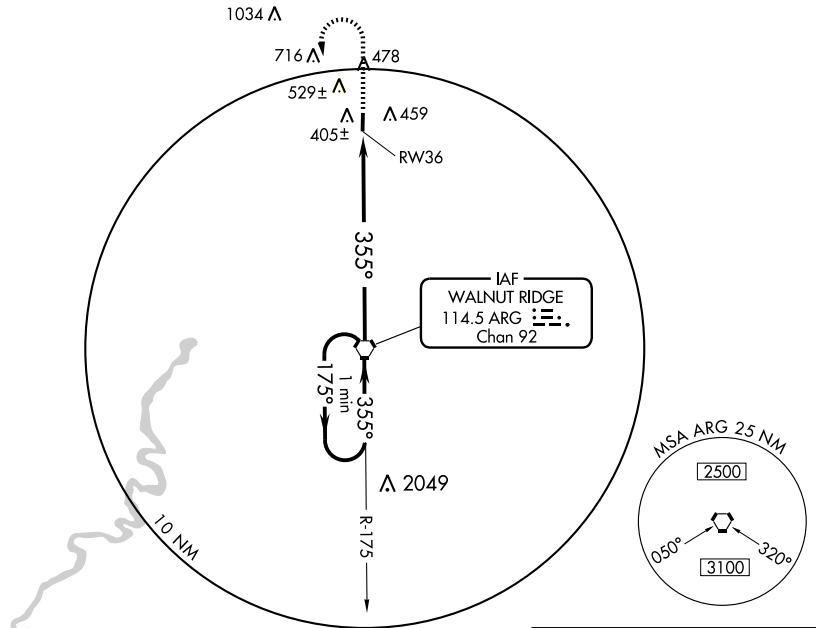
▲ NA Use Walnut Ridge altimeter setting; if not received use Jonesboro altimeter setting; when neither received, procedure not authorized.

MISSED APPROACH: Climb to 2000, then left turn direct ARG VORTAC and hold.

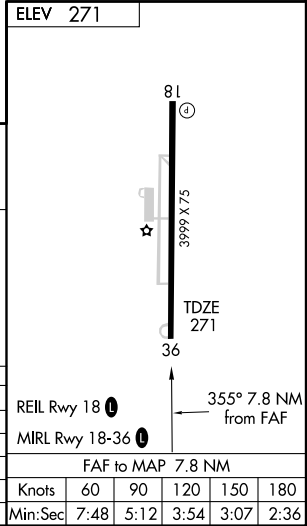
WALNUT RIDGE AWOS-3 135.925	MEMPHIS CENTER 120.075 289.4	UNICOM 122.8 (CTAF)	122.7 0
---------------------------------------	----------------------------------------	-------------------------------	-----------------------

SC-1, 22 OCT 2009 to 19 NOV 2009

SC-1, 22 OCT 2009 to 19 NOV 2009



	2000		ARG 114.5
CATEGORY	A	B	D
S-36	760-1	489 (500-1)	NA
CIRCLING	840-1	569 (600-1)	NA
JONESBORO ALTIMETER SETTING MINIMUMS			
S-36	940-1	669 (700-1)	NA
CIRCLING	960-1	689 (700-1)	NA



REIL Rwy 18 0	60	90	120	150	180
MIRL Rwy 18-36 0	7:48	5:12	3:54	3:07	2:36