

LINCOLN, CALIFORNIA

AL-5850 (FAA)

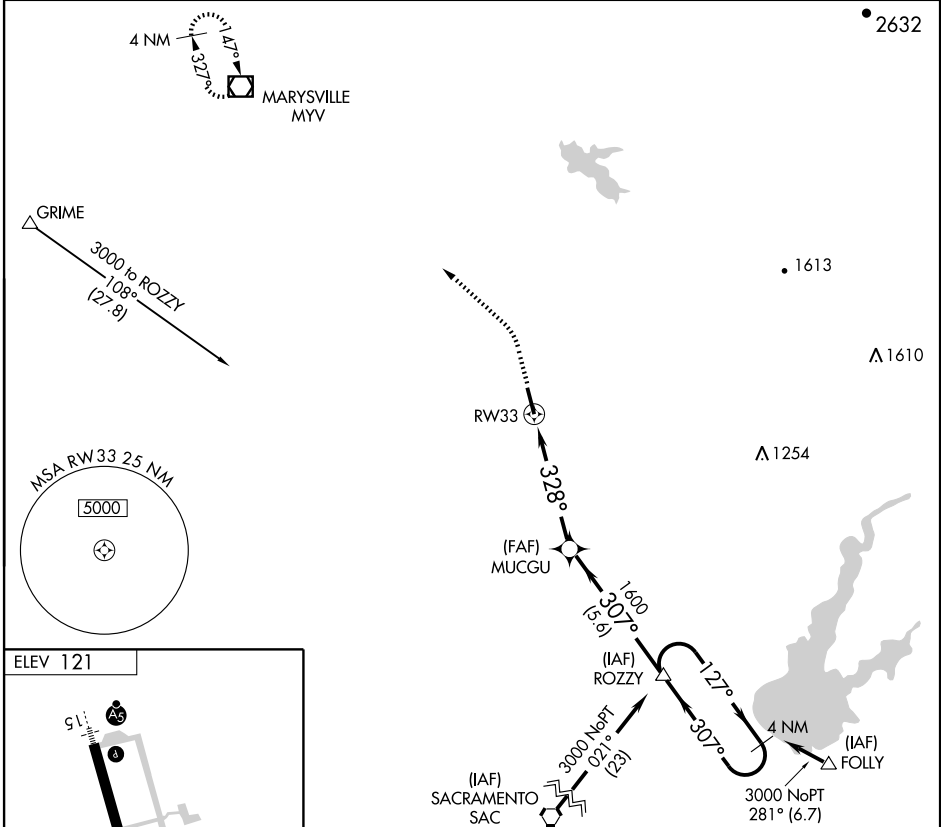
GPS RWY 33

LINCOLN RGNL/ KARL HARDER FIELD (LHM)

APP CRS 328°	Rwy Idg TDZE Apt Elev	6001 121 121
------------------------	-----------------------------	---

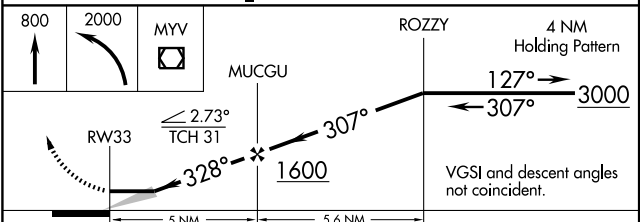
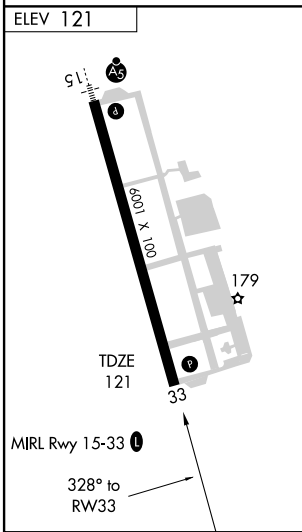
MISSED APPROACH: Climb to 800 then climbing left turn to 2000 direct to MYV VOR/DME and hold.

NA NA	AWOS-3 124.25	NORCAL APP CON 125.4 259.1	UNICOM 123.0 (CTAF) 0
----------	-------------------------	--------------------------------------	---------------------------------



SW-2, 22 OCT 2009 to 19 NOV 2009

SW-2, 22 OCT 2009 to 19 NOV 2009



CATEGORY	A	B	C	D
S-33	720-1	599 (600-1)	720-1½ 599 (600-1½)	720-1¾ 599 (600-1¾)
CIRCLING	720-1	599 (600-1)	720-1½ 599 (600-1½)	720-2 599 (600-2)

LINCOLN, CALIFORNIA
Orig 09127

38°55'N-121°21'W

LINCOLN RGNL/ KARL HARDER FIELD (LHM)

GPS RWY 33