

RNAV (GPS) RWY 2

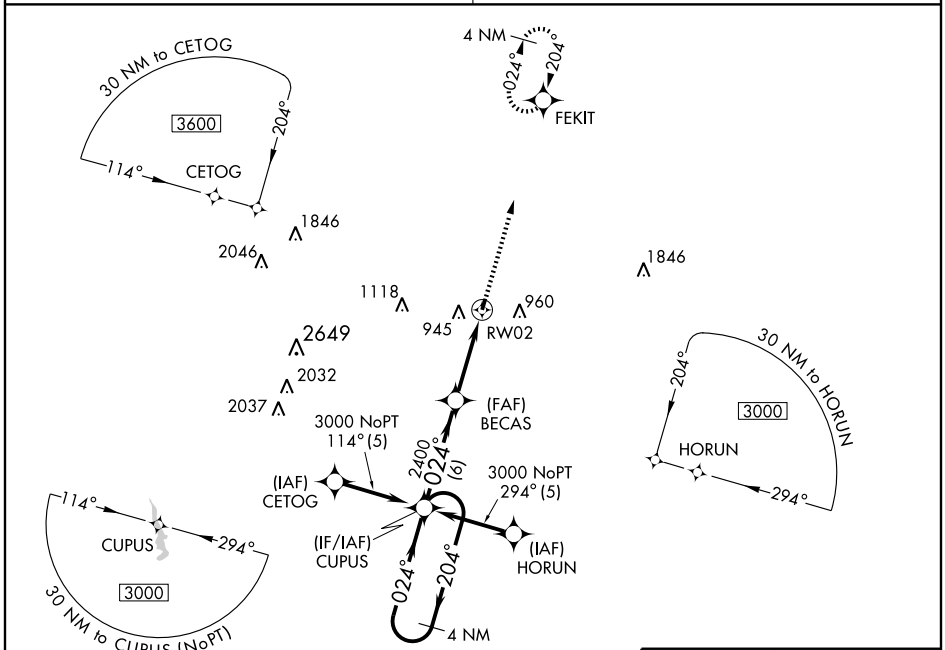
LIBERTY/CAUSEY (2A5)

APP CRS 024°	Rwy Idg 3800
	TDZE 723
	Apt Elev 723

▼ Obtain local altimeter setting on CTAF; when not received, use Burlington-Alamance altimeter setting minimums. GPS or RNP-0.3 Required. DME/DME RNP-0.3 NA. Procedure NA at night.

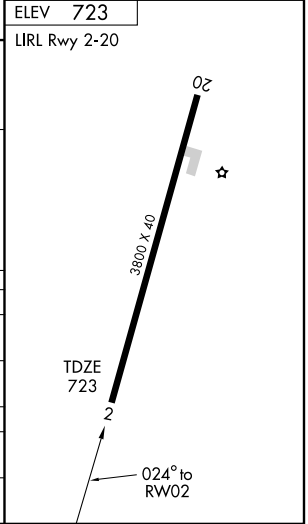
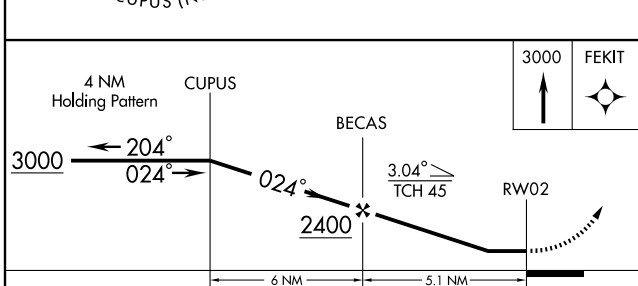
MISSED APPROACH: Climb to 3000 direct FEKIT WP and hold.

GREENSBORO APP CON 118.5 327.075	UNICOM 122.8 (CTAF)
--	-------------------------------



SE-2, 22 OCT 2009 to 19 NOV 2009

SE-2, 22 OCT 2009 to 19 NOV 2009



CATEGORY	A	B	C	D
LNAV MDA	1140-1	417 (500-1)	1140-1¼ 417 (500-1¼)	NA
CIRCLING	1180-1 457 (500-1)	1260-1 537 (600-1)	1260-1½ 537 (600-1½)	NA
BURLINGTON-ALAMANCE ALTIMETER SETTING MINIMUMS				
LNAV MDA	1180-1	457 (500-1)	1180-1¼ 457 (500-1¼)	NA
CIRCLING	1220-1 497 (500-1)	1300-1 577 (600-1)	1300-1½ 577 (600-1½)	NA