

# RNAV (GPS) RWY 28

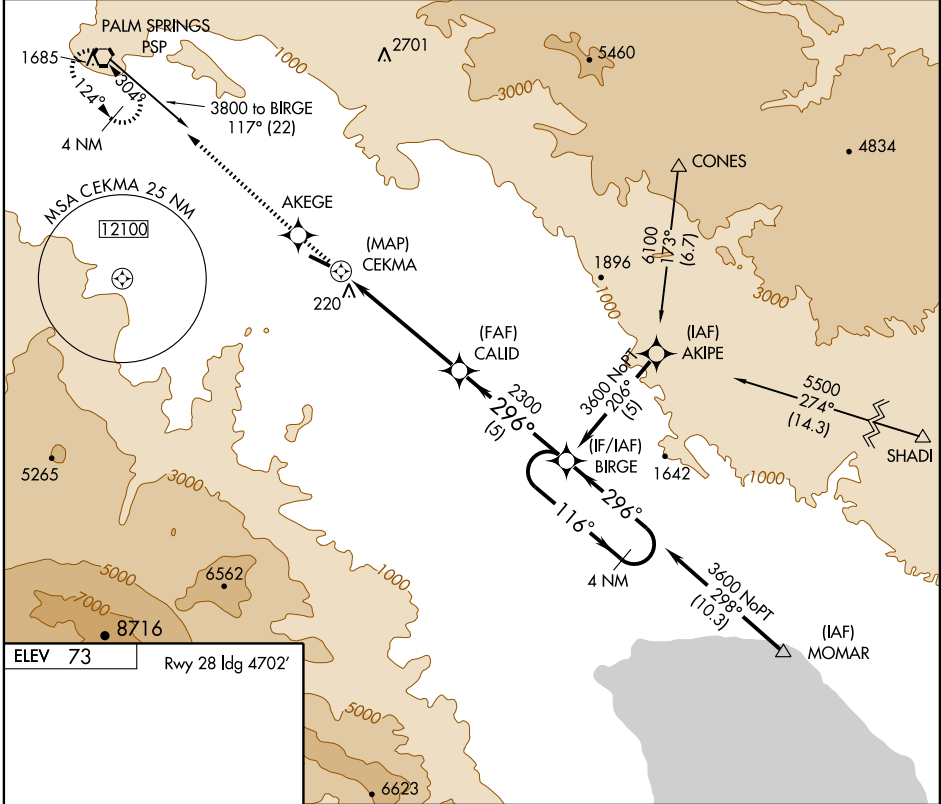
PALM SPRINGS/BERMUDA DUNES (UDD)

|                        |                        |
|------------------------|------------------------|
| APP CRS<br><b>296°</b> | Rwy Idg<br><b>4702</b> |
|                        | TDZE<br><b>66</b>      |
|                        | Apt Elev<br><b>73</b>  |

**NA** GPS or RNP-0.3 required. DME/DME RNP-0.3 NA. Use Jacqueline Cochran Rgnl altimeter setting.

**MISSED APPROACH:** Climb to 3300 via course 296° to AKEGE WP then right turn via course 298° to PSP VORTAC and hold.

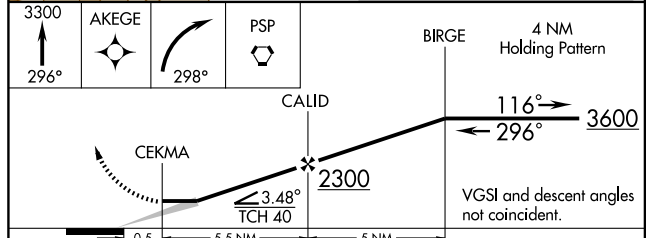
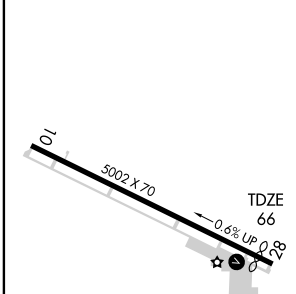
|  |   |                                 |
|--|---|---------------------------------|
| JACQUELINE COCHRAN REGIONAL ASOS<br><b>118.325</b> | SOCAL APP CON ★<br><b>135.275 251.1</b> | UNICOM<br><b>122.8 (CTAF) 0</b> |
|--|---|---------------------------------|



SW-3, 22 OCT 2009 to 19 NOV 2009

SW-3, 22 OCT 2009 to 19 NOV 2009

ELEV 73 Rwy 28 Idg 4702'



| CATEGORY | A                        | B                        | C                      | D  |
|----------|--------------------------|--------------------------|------------------------|----|
| LNAV MDA | 1020-1¼<br>954 (1000-1¼) | 1020-1½<br>954 (1000-1½) | 1020-3<br>954 (1000-3) | NA |
| CIRCLING | 1020-1¼<br>947 (1000-1¼) | 1020-1½<br>947 (1000-1½) | 1020-3<br>947 (1000-3) | NA |