

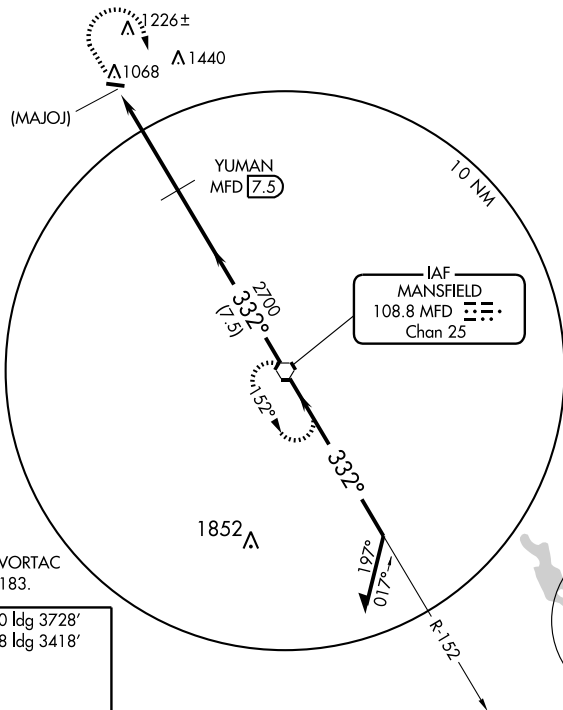
VOR/DME or GPS-A

WILLARD (8G1)

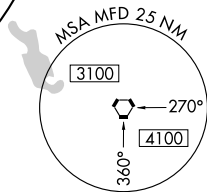
VORTAC MFD 108.8 Chan 25	APP CRS 332°	Rwy Idg TDZE Apt Elev N/A N/A 967
--	------------------------	---

▼ Use Mansfield altimeter setting; when not received, use Cleveland-Hopkins altimeter setting.
▲ NA MISSED APPROACH: Climb to 3000 then right turn direct MFD VORTAC and hold.

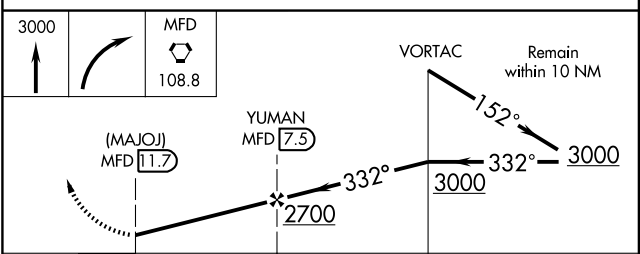
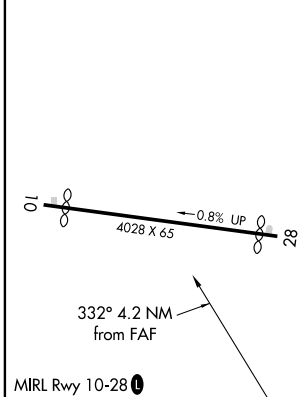
MANSFIELD APP CON ★ 124.2 390.8	CTAF 122.9
---	-------------------



NoPT for arrival on MFD VORTAC
 Airway Radials 101 CW 183.



ELEV 967	Rwy 10 ldg 3728'
	Rwy 28 ldg 3418'



CATEGORY	A	B	C	D
CIRCLING	1680-1	713 (800-1)	1680-2 713 (800-2)	NA
CLEVELAND-HOPKINS ALTIMETER SETTING MINIMUMS				
CIRCLING	1720-1 753 (800-1)	1720-1¼ 753 (800-1¼)	1720-2¼ 753 (800-2¼)	NA

EC-2, 22 OCT 2009 to 19 NOV 2009

EC-2, 22 OCT 2009 to 19 NOV 2009