

WELLSVILLE, NEW YORK

AL-5845 (FAA)

VOR-A

WELLSVILLE MUNI AIRPORT, TARANTINE FIELD (ELZ)

VORTAC ELZ 111.4 Chan 51	APP CRS 029°	Rwy ldg TDZE Apt Elev	N/A N/A 2124
--	------------------------	-----------------------------	---

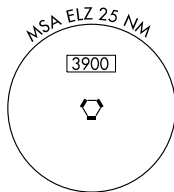
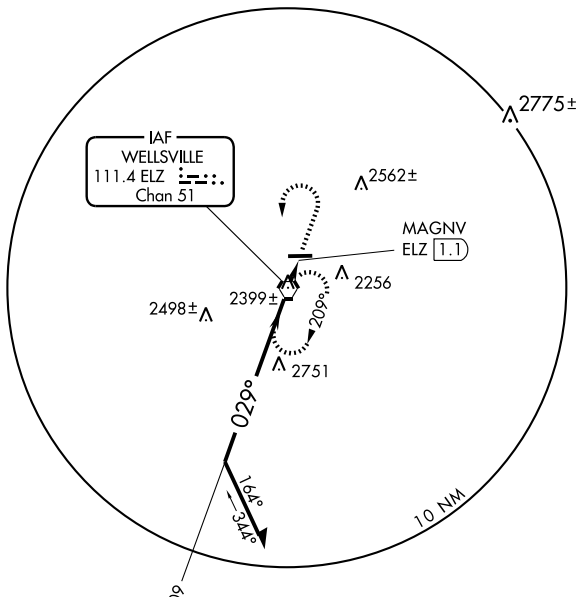
⚠ If local altimeter setting not received, use Bradford, PA altimeter setting.

MISSED APPROACH: Climb to 4100 then left turn direct ELZ VORTAC and hold.

ASOS
119.275

CLEVELAND CENTER
124.325 353.850

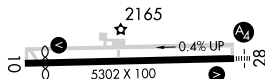
UNICOM
123.0 (CTAF) **⓪**



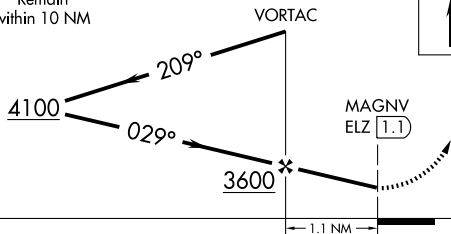
NE-2, 22 OCT 2009 to 19 NOV 2009

NE-2, 22 OCT 2009 to 19 NOV 2009

ELEV 2124 Rwy 10 ldg 4900'
Rwy 28 ldg 4900'



Remain within 10 NM



4100
↑
ELZ
111.4

029° 1.1 NM from FAF

REIL Rwy 10 **⓪**
HIRL Rwy 10-28 **⓪**

CATEGORY	A	B	C	D	FAF to MAP 1.1 NM					
CIRCLING	3160-1¼ 1036 (1100-1¼)	3160-1½ 1036 (1100-1½)	3160-3 1036 (1100-3)	3200-3 1076 (1100-3)	Knots	60	90	120	150	180
					Min:Sec	1:06	0:44	0:33	0:26	0:22

WELLSVILLE, NEW YORK
Amdt 6 07018

WELLSVILLE MUNI AIRPORT, TARANTINE FIELD (ELZ)
42°07'N - 77°59'W

VOR-A