

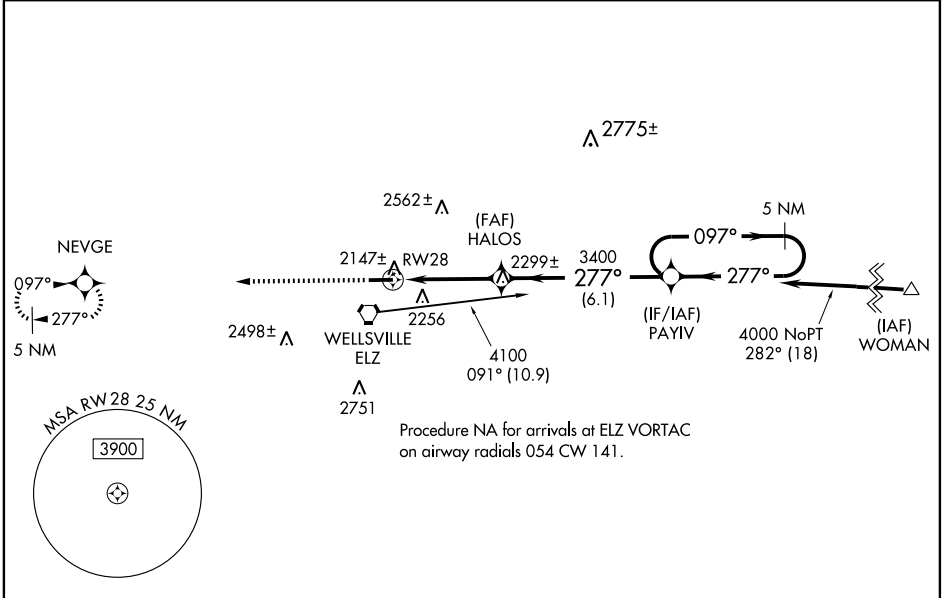
WAAS CH 49102 W28A	APP CRS 277°	Rwy ldg 4900 TDZE 2111 Apt Elev 2124
--	------------------------	---

RNAV (GPS) RWY 28

WELLSVILLE MUNI AIRPORT, TARANTINE FIELD (ELZ)

<p>⚠ Inoperative table does not apply. Baro-VNAV NA when using Bradford, PA altimeter setting. For uncompensated Baro-VNAV systems, LNAV/VNAV NA below -19°C (-2°F) or above 44°C (111°F). DME/DME RNP-0.3 NA. Visibility reduction by helicopters NA. If local altimeter setting not received, use Bradford, PA altimeter setting and increase DAs/MDAs 260 feet.</p>	<p>MALS </p>	<p>MISSED APPROACH: Climb to 4000 direct NEVGE and hold.</p>
---	------------------	--

ASOS 119.275	CLEVELAND CENTER 124.325 353.850	UNICOM 123.0 (CTAF) 0
------------------------	--	---------------------------------



NE-2, 22 OCT 2009 to 19 NOV 2009

NE-2, 22 OCT 2009 to 19 NOV 2009

ELEV 2124	Rwy 10 ldg 4900' Rwy 28 ldg 4900'
-----------	--------------------------------------

2165

0.4% UP

5302 X 100

TDZE 2111

277° to RW28

REIL Rwy 10 0

HIRL Rwy 10-28 0

	4000	NEVGE		PAYIV	5 NM Holding Pattern
				097° →	← 277° 4000
	RW28	HALOS		277°	3400
	3.9 NM	6.1 NM		GS 3.00°	TCH 47
CATEGORY	A	B	C	D	
LPV DA	2361-1		250 (300-1)		
LNAV/VNAV DA	2582-1¾		471 (500-1¾)		
LNAV MDA	2560-1	449 (500-1)		2560-1½	449 (500-1½)
CIRCLING	2700-1¾		576 (600-1¾)		2700-2 576 (600-2)