

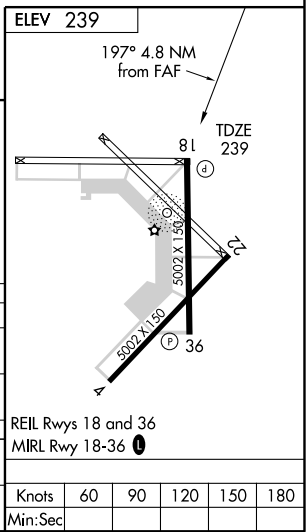
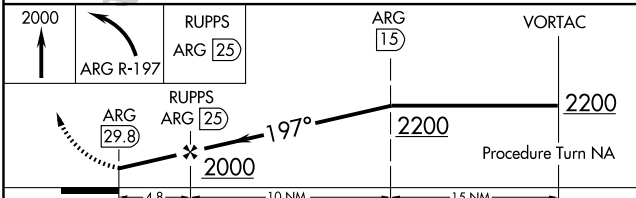
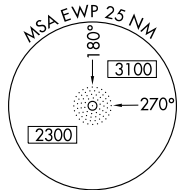
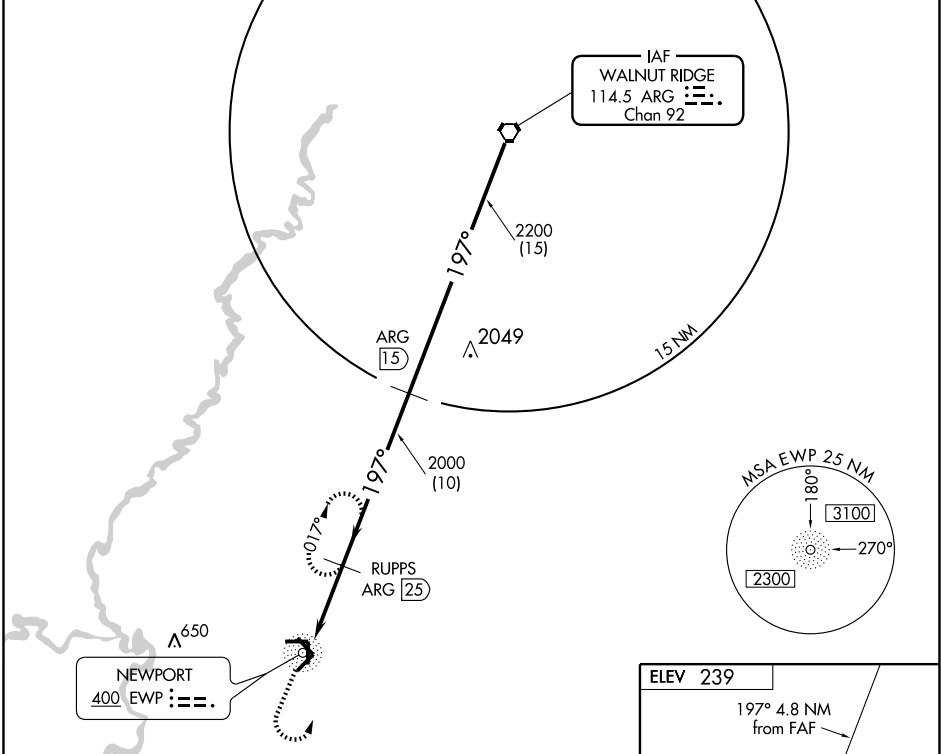
# VOR/DME RWY 18

NEWPORT MUNI (M19)

VORTAC ARG <b>114.5</b> Chan <b>92</b>	APP CRS <b>197°</b>	Rwy Idg TDZE Apt Elev	<b>5002</b> <b>239</b> <b>239</b>
--	------------------------	-----------------------------	---

Obtain local altimeter setting on CTAF; if not received, use Batesville Rgnl altimeter setting. MISSED APPROACH: Climb to 2000 then left turn via ARG VORTAC R-197 to RUPPS 25 DME and hold.

ASOS <b>118.15</b>	MEMPHIS CENTER <b>120.075 289.4</b>	UNICOM <b>122.8 (CTAF) 0</b>
-----------------------	--	---------------------------------



CATEGORY	A	B	C	D
S-18	1300-1¼ 1061 (1100-1¼)	1300-1½ 1061 (1100-1½)	1300-3	1061 (1100-3)
CIRCLING	1300-1¼ 1061 (1100-1¼)	1300-1½ 1061 (1100-1½)	1300-3	1061 (1100-3)
BATESVILLE ALTIMETER SETTING MINIMUMS				
S-18	1400-1¼ 1161 (1200-1¼)	1400-1½ 1161 (1200-1½)	1400-3	1161 (1200-3)
CIRCLING	1400-1¼ 1161 (1200-1¼)	1400-1½ 1161 (1200-1½)	1400-3	1161 (1200-3)

SC-1, 22 OCT 2009 to 19 NOV 2009

SC-1, 22 OCT 2009 to 19 NOV 2009