

RNAV (GPS) RWY 23

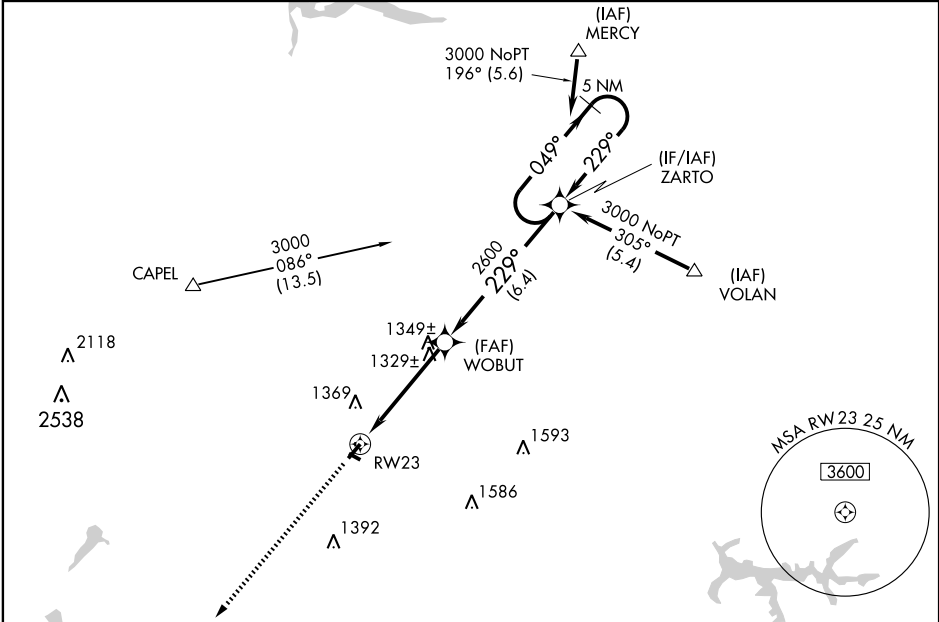
NEW CASTLE MUNI (UCP)

WAAS CH 45605 W23A	APP CRS 229°	Rwy Idg TDZE 1027 Apt Elev 1070	3995
--	------------------------	---	-------------

▽ DME/DME RNP-0.3 NA. Visibility reduction by helicopters NA.
△ NA When local altimeter setting not received, use Youngstown/Warren altimeter setting and increase all DA 61 feet and all MDA 80 feet and LPV All Cats, LNAV Cat C, and Circling Cat C visibilities ½ mile. Circling to Rwy 13/31 NA at night.

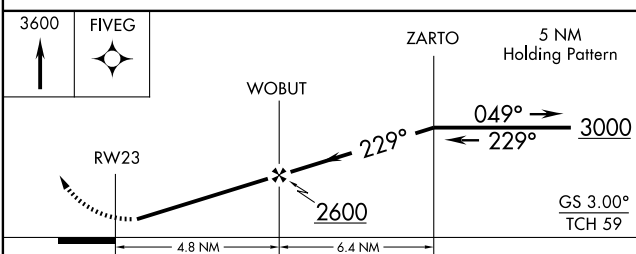
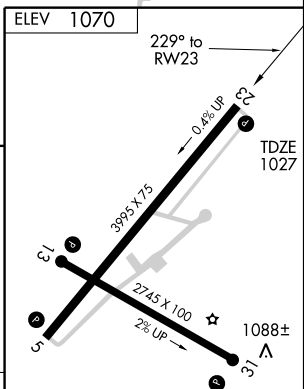
MISSED APPROACH:
 Climb to 3600 direct FIVEG and hold.

ASOS 124.175	YOUNGSTOWN/ WARREN ASOS 123.750	YOUNGSTOWN APP CON * 133.95 322.3	UNICOM 123.0 (CTAF) 1
------------------------	--	---	--



NE-4, 22 OCT 2009 to 19 NOV 2009

NE-4, 22 OCT 2009 to 19 NOV 2009



CATEGORY	A	B	C	D
LPV DA	1288-1 261 (300-1)			NA
LNAV MDA	1580-1	553 (600-1)	1580-1½ 553 (600-1½)	NA
CIRCLING	1580-1 510 (600-1)	1700-1 630 (700-1)	1700-1¾ 630 (700-¾)	NA

