

RNAV (GPS) RWY 36

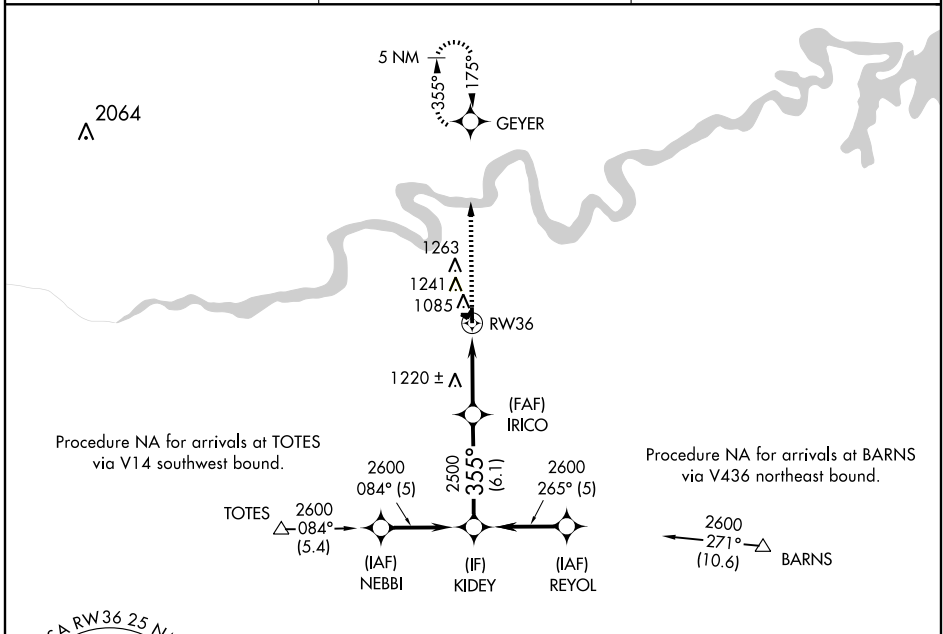
CUSHING MUNI (CUH)

| | |
|------------------------|------------------------|
| APP CRS 355° | Rwy Idg 4986 |
| | TDZE 903 |
| | Apt Elev 916 |

▼ If local altimeter setting not received, use Chandler Rgnl altimeter setting and increase all MDAs 60 feet. DME/DME RNP-0.3 NA.
▲ VDP NA with Chandler Rgnl altimeter setting.

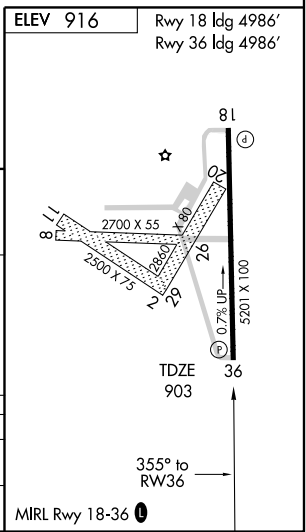
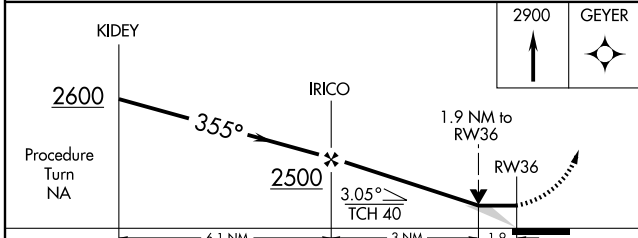
MISSED APPROACH: Climb to 2900 direct GEYER and hold.

| | | |
|-------------------------|--|---------------------------------|
| AWOS-3 118.25 | KANSAS CITY CENTER 128.3 291.7 | UNICOM 122.8 (CTAF) 0 |
|-------------------------|--|---------------------------------|



SC-1, 22 OCT 2009 to 19 NOV 2009

SC-1, 22 OCT 2009 to 19 NOV 2009



| CATEGORY | A | B | C | D |
|----------|--------|-------------|-------------------------|----|
| LNVA MDA | 1520-1 | 617 (700-1) | 1520-1¼ 617 (700-1¼) | NA |
| CIRCLING | 1600-1 | 684 (700-1) | 1600-2 684 (700-2) | NA |