

RNAV (GPS) RWY 14

BENSON MUNI (BBB)

WAAS CH 49210 W14A	APP CRS 138°	Rwy Idg 4000 TDZE 1039 Apt Elev 1039
--	------------------------	---

⚠ For uncompensated Baro-VNAV systems, LNAV/VNAV NA below -17°C (2°F) or above 54°C (130°F).
⚠ DME/DME RNP -0.3 NA.
 Baro-VNAV and VDP NA when using Appleton altimeter setting.
 When local altimeter setting not received, use Appleton altimeter setting and increase all DA and MDA 40 feet, increase Circling Cat B visibility ¼ mile.

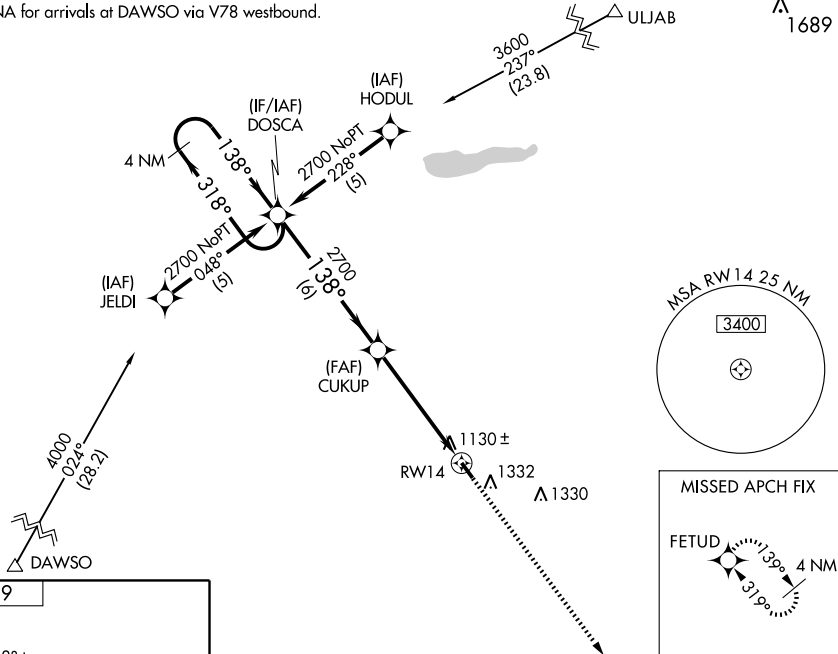
MISSED APPROACH: Climb to 2700 direct FETUD and hold.

AWOS-3
239

MINNEAPOLIS CENTER
125.5 323.1

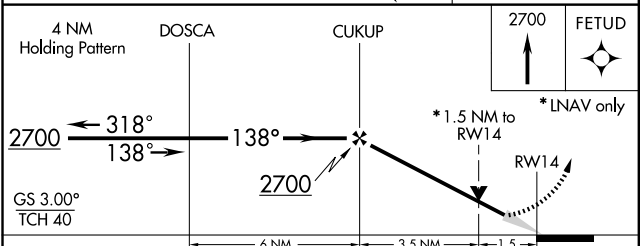
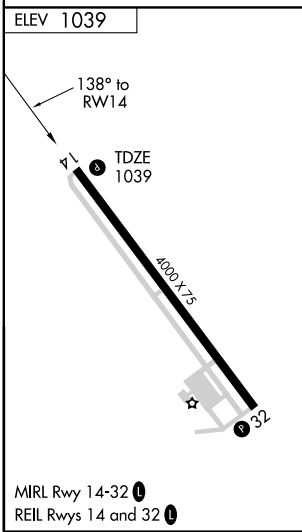
UNICOM
122.8 (CTAF) 0

Procedure NA for arrivals at DAWSO via V78 westbound.



NC-1, 22 OCT 2009 to 19 NOV 2009

NC-1, 22 OCT 2009 to 19 NOV 2009



CATEGORY	A	B	C	D
LPV DA	1382-1¼	343 (400-1¼)		NA
LNAV/VNAV DA	1426-1½	387 (400-1½)		NA
LNAV MDA	1540-1	501 (600-1)		NA
CIRCLING	1740-1	701 (800-1)		NA