

BENSON, MINNESOTA

AL-5839 (FAA)

# NDB RWY 14

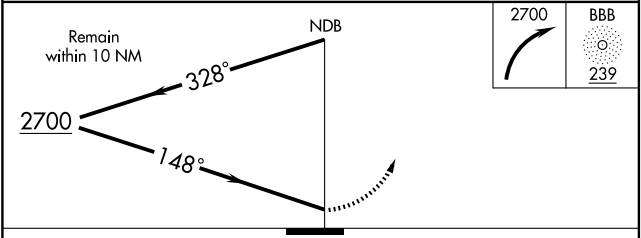
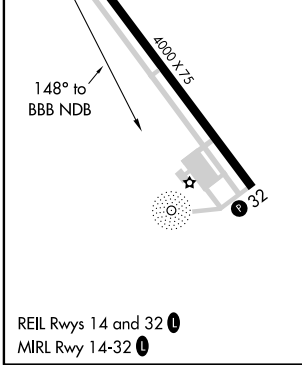
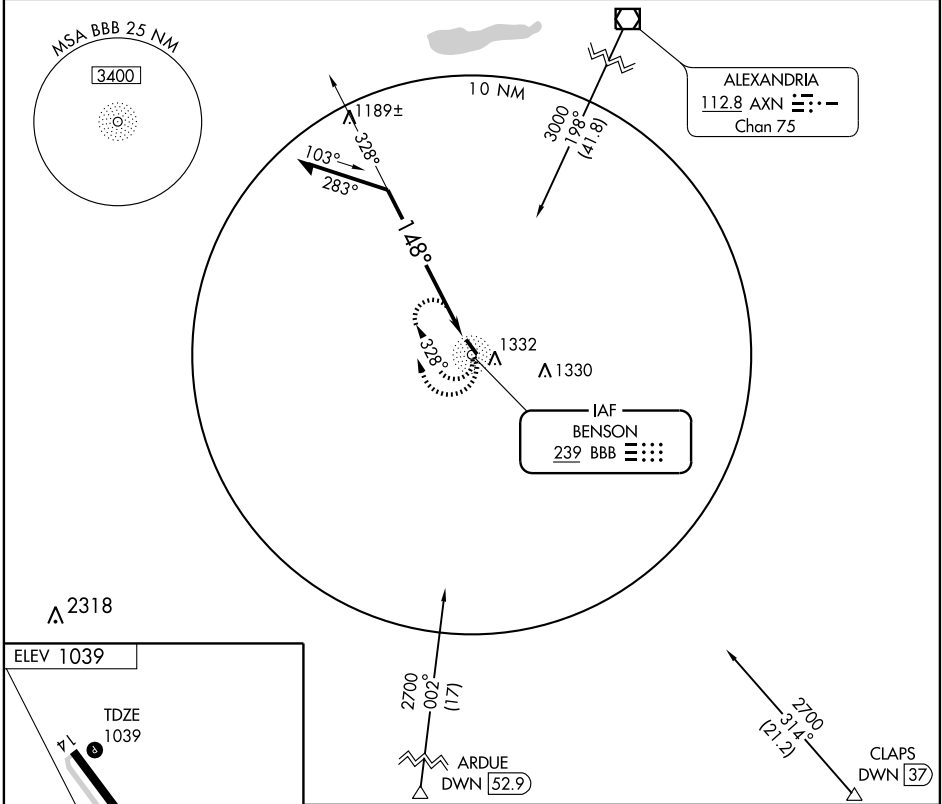
BENSON MUNI (BBB)

NDB BBB <b>239</b>	APP CRS <b>148°</b>	Rwy Idg TDZE Apt Elev	<b>4000</b> <b>1039</b> <b>1039</b>
-----------------------	------------------------	-----------------------------	---

**NA** If local altimeter setting not received, use Appleton altimeter setting and increase all MDAs 40 feet.

MISSED APPROACH: Climbing right turn to 2700 in BBB NDB holding pattern.

AWOS-3 <b>239</b>	MINNEAPOLIS CENTER <b>125.5 323.1</b>	UNICOM <b>122.8 (CTAF)</b>
----------------------	--	-------------------------------



CATEGORY	A	B	C	D
S-14	1700-1	661 (700-1)	NA	
CIRCLING	1740-1	701 (800-1)	NA	

BENSON, MINNESOTA  
Amdt 7A 09071

45°20'N-95°39'W

# BENSON MUNI (BBB) NDB RWY 14

NC-1, 22 OCT 2009 to 19 NOV 2009

NC-1, 22 OCT 2009 to 19 NOV 2009