

BARTOW, FLORIDA

AL-5838 (FAA)

VORTAC LAL <b>116.0</b> Chan <b>107</b>	APP CRS <b>101°</b>	Rwy Idg TDZE <b>125</b> Apt Elev <b>125</b>	<b>5000</b>
---	------------------------	---	-------------

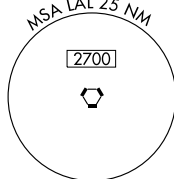
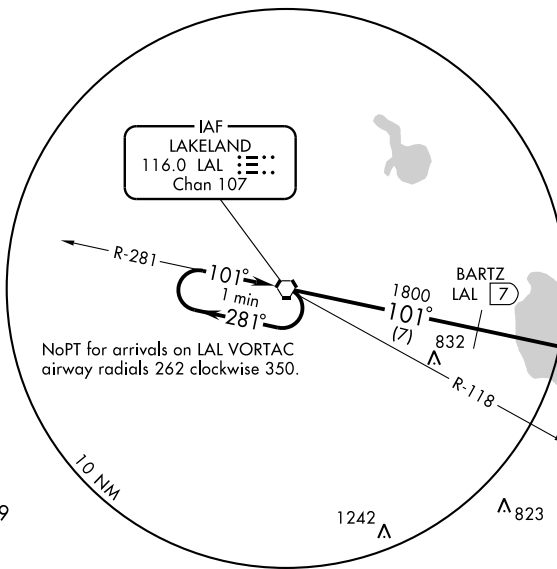
# VOR/DME RWY 9L

BARTOW MUNI (BOW)

**▼** If local altimeter not received, use Tampa Intl altimeter setting and raise all MDAs 120 feet.  
**▲** NA

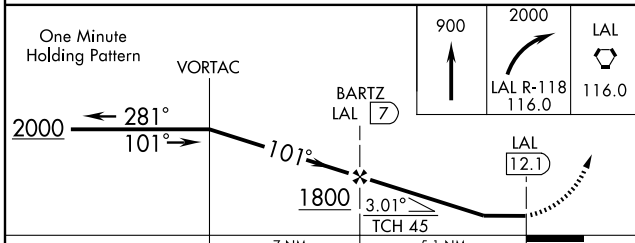
MISSED APPROACH: Climb to 900 then climbing right turn to 2000 via LAL R-118 to LAL VORTAC and hold.

AWOS-3 <b>123.775</b>	TAMPA APP CON <b>120.65 290.3</b>	<b>BARTOW TOWER ★</b> <b>121.2</b> (CTAF)	GND CON <b>121.9</b>	UNICOM <b>122.95</b>
--------------------------	--------------------------------------	--	-------------------------	-------------------------



SE-3, 22 OCT 2009 to 19 NOV 2009

SE-3, 22 OCT 2009 to 19 NOV 2009



CATEGORY	A	B	C	D
S-9L	520-1 395 (400-1)			520-1¼ 395 (400-1¼)
CIRCLING	580-1	455 (500-1)	580-1½ 455 (500-1½)	680-2 555 (600-2)

MIRL Rwy 5-23 and 9L-27R  
REIL Rwy 5, 23, 9L and 27R

BARTOW, FLORIDA  
Amdt 2B 09127

27° 57' N - 81° 47' W

# BARTOW MUNI (BOW)

## VOR/DME RWY 9L