

BARTOW, FLORIDA

AL-5838 (FAA)

WAAS CH 90511 W09A	APP CRS 091°	Rwy Idg TDZE Apt Elev	5000 125 125
--	------------------------	-----------------------------	---

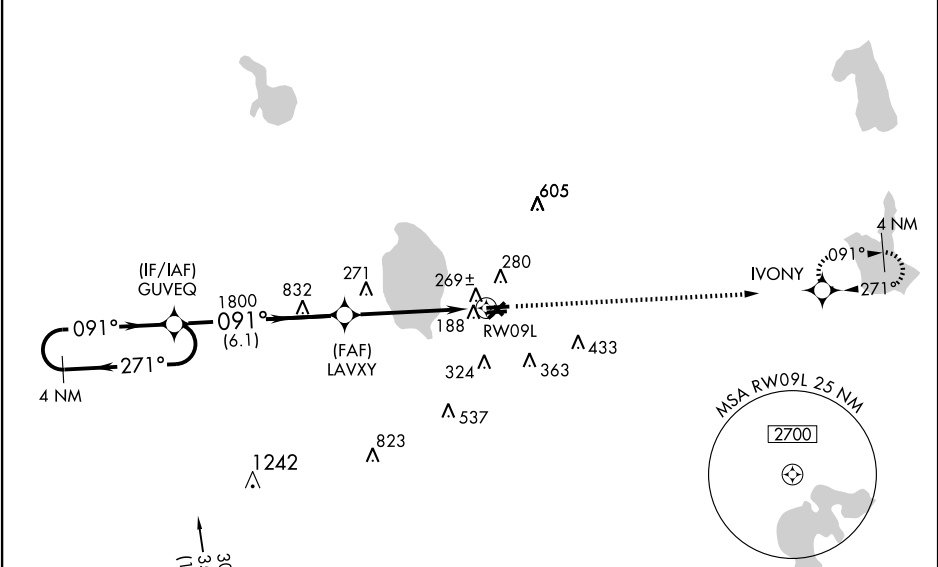
RNAV (GPS) RWY 9L

BARTOW MUNI (BOW)

For uncompensated Baro-VNAV systems, LNAV/VNAV NA below -15°C (5°F) or above 48°C (118°F). DME/DME RNP 0.3 NA. Visibility reduction by helicopters NA. When local altimeter setting not received, use Tampa Intl altimeter setting and increase all DA 106 feet, all MDA 120 feet, increase LPV and LNAV/VNAV visibility all Cats, LNAV Cat C visibility and Circling Cat D visibility 1/4 mile, and LNAV Cat D 1/2 mile. VDP NA when using Tampa Intl altimeter setting. Baro-VNAV NA when using Tampa Intl altimeter setting.

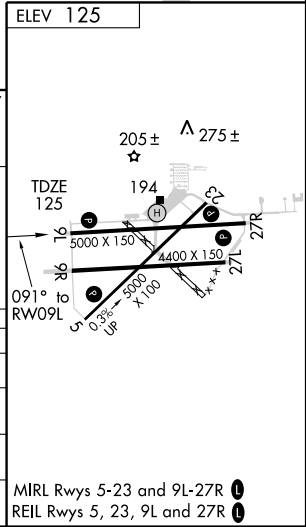
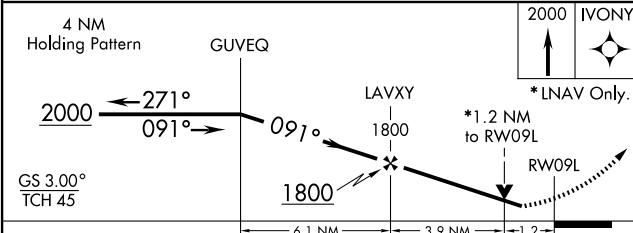
MISSED APPROACH:
Climb to 2000 direct
IVONY and hold.

AWOS-3 123.775	TAMPA APP CON 120.65 290.3	BARTOW TOWER ★ 121.20 (CTAF)	GND CON 121.9	UNICOM 122.95
--------------------------	--------------------------------------	---	-------------------------	-------------------------



SE-3, 22 OCT 2009 to 19 NOV 2009

SE-3, 22 OCT 2009 to 19 NOV 2009



CATEGORY	A	B	C	D
LPV DA		442-1 1/4	317 (400-1 1/4)	
LNAV/VNAV DA		539-1 1/2	414 (500-1 1/2)	
LNAV MDA	540-1 415 (500-1)		540-1 1/4 415 (500-1 1/4)	
CIRCLING	580-1 455 (500-1)		580-1 1/2 455 (500-1 1/2)	680-2 555 (600-2)

BARTOW, FLORIDA
Amdt 1A 09183

27° 57' N - 81° 47' W

BARTOW MUNI (BOW)

RNAV (GPS) RWY 9L

MIRL Rwy 5-23 and 9L-27R
REIL Rwy 5, 23, 9L and 27R