

NEWBERRY, MICHIGAN

AL-5836 (FAA)

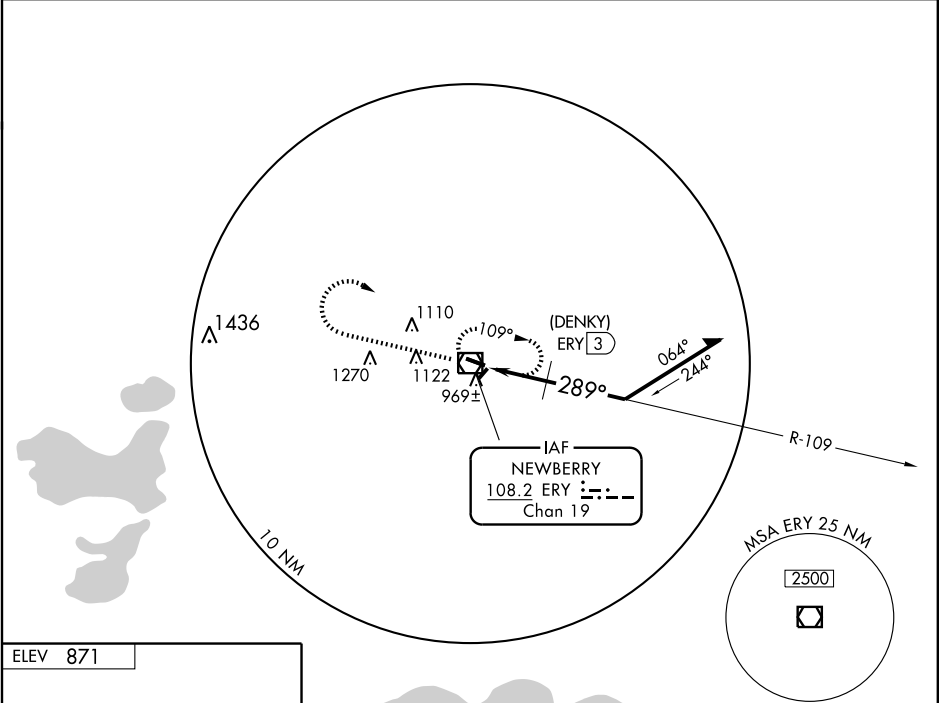
VOR/DME ERY	APP CRS	Rwy Idg	4304
108.2	289°	TDZE	869
Chan 19		Apt Elev	871

VOR or GPS RWY 29

NEWBERRY/LUCE COUNTY (ERY)

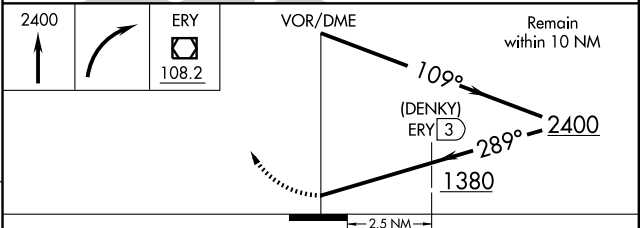
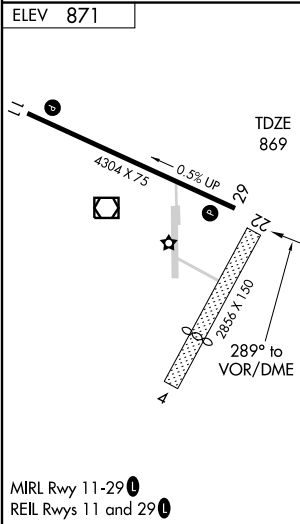
<p>▲ NA</p>	<p>MISSED APPROACH: Climb to 2400 then right turn direct ERY VOR/DME and hold.</p>
-------------	--

<p>AWOS-3 108.2</p>	<p>GREEN BAY RADIO 122.4</p>	<p>UNICOM 122.8 (CTAF) 1</p>
--------------------------------	---	--



EC-1, 22 OCT 2009 to 19 NOV 2009

EC-1, 22 OCT 2009 to 19 NOV 2009



CATEGORY	A		B		C		D	
	S-29	1380-1	511 (600-1)	1380-1½	511 (600-1½)	1380-1½	511 (600-1½)	1480-2
CIRCLING	1380-1	509 (600-1)	1380-1½	509 (600-1½)	1380-1½	509 (600-1½)	1480-2	609 (700-2)
DME MINIMUMS								
S-29	1220-1		351 (400-1)		1220-1¼		351 (400-1¼)	
CIRCLING	1280-1	409 (500-1)	1340-1	469 (500-1)	1340-1½	469 (500-1½)	1480-2	609 (700-2)

NEWBERRY, MICHIGAN
Amdt 11A 09295

46°19'N - 85°27'W

VOR or GPS RWY 29