

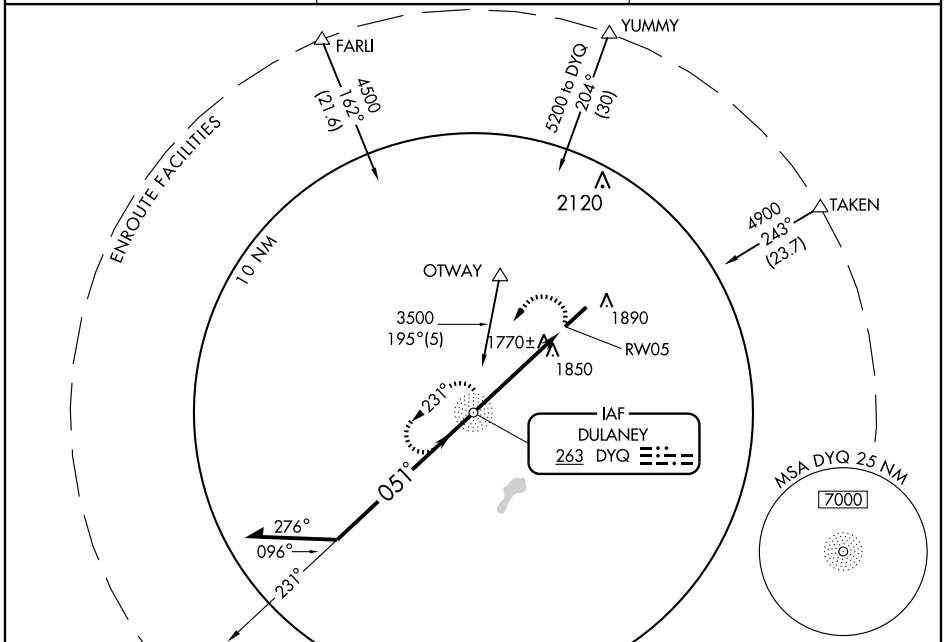
NDB DYQ	APP CRS	Rwy Idg	6302
263	051°	TDZE	1604
		Apt Elev	1608

NDB or GPS RWY 5

GREENEVILLE-GREENE COUNTY MUNI (GCY)

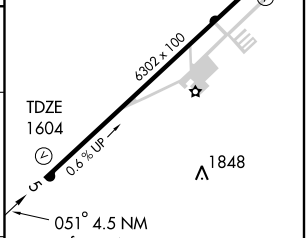
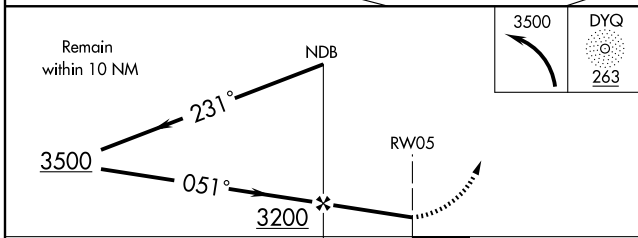
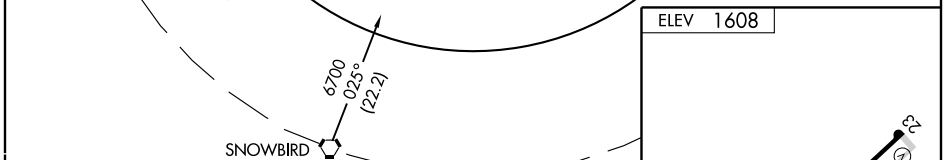
▼ If local altimeter not received use Tri-Cities Rgnl altimeter setting and increase all MDAs 120 feet. **MISSED APPROACH:** Climbing left turn to 3500 direct DYQ NDB and hold.

AWOS-3 128.425	TRI-CITY APP CON★ 119.25 317.5	UNICOM 122.7 (CTAF)
--------------------------	--	-------------------------------



SE-1, 22 OCT 2009 to 19 NOV 2009

SE-1, 22 OCT 2009 to 19 NOV 2009



CATEGORY	A	B	C	D
S-5	2160-1	556 (600-1)	2160-1½ 556 (600-1½)	2160-1¾ 556 (600-1¾)
CIRCLING	2260-1	652 (700-1)	2260-1¾ 652 (700-1¾)	2260-2 652 (700-2)

MIRL Rwy 5-23
REIL Rws 5 and 23

FAF to MAP 4.5 NM					
Knots	60	90	120	150	180
Min:Sec	4:30	3:00	2:15	1:48	1:30